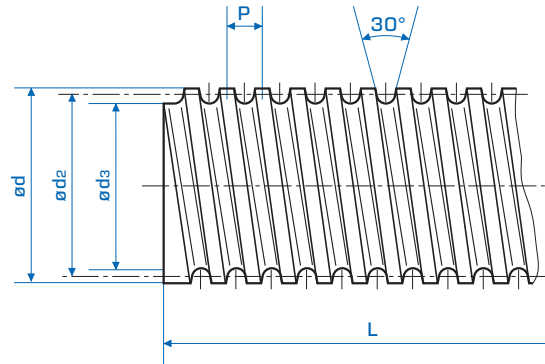


Trapezgewindespindeln gerollt rechtsgängig

Lead screws rolled finish right hand

DIN 103
Quality 7e
Steel: 1.0501 (C35)

DIN 103
Qualität 7e
Stahl: 1.0501 (C35)



Tr d x p	d _{2 min}	d _{2 max}	d _{3 min}	L	[kg]	Bestell Nr. Part No.
12 x 3	10,191	10,415	7,8	1 000	0,75	500-012-010
12 x 3	10,191	10,415	7,8	2 000	1,50	500-012-020
12 x 3	10,191	10,415	7,8	3 000	2,25	500-012-030
14 x 3	12,191	12,415	9,8	1 000	1,04	500-014-010
14 x 3	12,191	12,415	9,8	2 000	2,08	500-014-020
14 x 3	12,191	12,415	9,8	3 000	3,12	500-014-030
16 x 4	13,640	13,905	10,8	1 000	1,2	500-016-010
16 x 4	13,640	13,905	10,8	2 000	2,4	500-016-020
16 x 4	13,640	13,905	10,8	3 000	3,6	500-016-030
18 x 4	15,640	15,905	12,8	1 000	1,58	500-018-010
18 x 4	15,640	15,905	12,8	2 000	3,16	500-018-020
18 x 4	15,640	15,905	12,8	3 000	4,74	500-018-030
20 x 4	17,640	17,905	14,8	1 000	2,0	500-020-010
20 x 4	17,640	17,905	14,8	2 000	4,0	500-020-020
20 x 4	17,640	17,905	14,8	3 000	6,0	500-020-030
22 x 5	19,114	19,394	15,5	1 000	2,23	500-022-010
22 x 5	19,114	19,394	15,5	2 000	4,46	500-022-020
22 x 5	19,114	19,394	15,5	3 000	6,69	500-022-030
24 x 5	21,094	21,394	17,5	1 000	2,7	500-024-010
24 x 5	21,094	21,394	17,5	2 000	5,4	500-024-020
24 x 5	21,094	21,394	17,5	3 000	8,1	500-024-030
26 x 5	23,094	23,394	19,5	1 000	3,26	500-026-010
26 x 5	23,094	23,394	19,5	2 000	6,52	500-026-020
26 x 5	23,094	23,394	19,5	3 000	9,78	500-026-030
28 x 5	25,094	25,394	21,5	1 000	3,85	500-028-010
28 x 5	25,094	25,394	21,5	2 000	7,70	500-028-020
28 x 5	25,094	25,394	21,5	3 000	11,55	500-028-030
30 x 6	26,547	26,882	21,9	1 000	4,5	500-030-010
30 x 6	26,547	26,882	21,9	2 000	9,0	500-030-020
30 x 6	26,547	26,882	21,9	3 000	13,5	500-030-030

Steigungsgenauigkeit
Geradheit

0,1/300 mm
0,3/300 mm

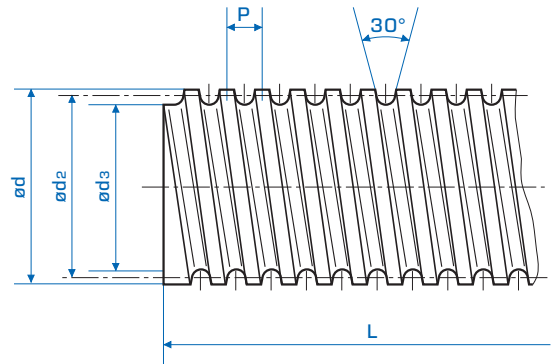
Lead tolerance
Straightness

Trapezgewindespindeln gerollt rechtsgängig

Lead screws rolled finish right hand

DIN 103
 Quality 7e
 Steel: 1.0501 (C35)

DIN 103
 Qualität 7e
 Stahl: 1.0501 (C35)



Tr d x p	d ₂ min	d ₂ max	d ₃ min	L	[kg]	Bestell Nr. Part No.
32 x 6	28,547	28,882	23,9	1 000	5,18	500-032-010
32 x 6	28,547	28,882	23,9	2 000	10,36	500-032-020
32 x 6	28,547	28,882	23,9	3 000	15,54	500-032-030
36 x 6	32,547	32,882	27,9	1 000	6,7	500-036-010
36 x 6	32,547	32,882	27,9	2 000	13,4	500-036-020
36 x 6	32,547	32,882	27,9	3 000	20,1	500-036-030
40 x 7	36,020	36,375	30,5	1 000	8,0	500-040-010
40 x 7	36,020	36,375	30,5	2 000	16,0	500-040-020
40 x 7	36,020	36,375	30,5	3 000	24,0	500-040-030
44 x 7	40,020	40,375	34,5	1 000	9,87	500-044-010
44 x 7	40,020	40,375	34,5	2 000	19,74	500-044-020
44 x 7	40,020	40,375	34,5	3 000	29,61	500-044-030
48 x 8	43,468	43,868	37,8	1 000	11,95	500-048-010
48 x 8	43,468	43,868	37,8	2 000	23,90	500-048-020
48 x 8	43,468	43,868	37,8	3 000	35,85	500-048-030
50 x 8	45,468	45,868	39,3	1 000	13,0	500-050-010
50 x 8	45,468	45,868	39,3	2 000	26,0	500-050-020
50 x 8	45,468	45,868	39,3	3 000	39,0	500-050-030
60 x 9	54,935	55,360	48,1	1 000	18,0	500-060-010
60 x 9	54,935	55,360	48,1	2 000	36,0	500-060-020
60 x 9	54,935	55,360	48,1	3 000	54,0	500-060-030

Steigungsgenauigkeit
 Geradheit

0,1/300 mm
 0,3/300 mm

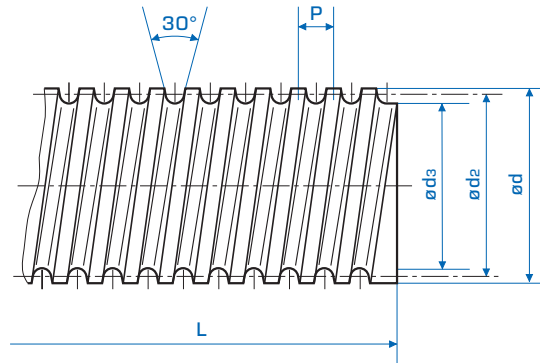
Lead tolerance
Straightness

Trapezgewindespindeln gerollt linksgängig

Lead screws rolled finish left hand

DIN 103
 Quality 7e
 Steel: 1.0501 (C35)

DIN 103
 Qualität 7e
 Stahl: 1.0501 (C35)



Tr d x p	d _{2 min}	d _{2 max}	d _{3 min}	L	[kg]	Bestell Nr. Part No.
12 x 3	10,191	10,415	7,8	1 000	0,75	505-012-010
12 x 3	10,191	10,415	7,8	2 000	1,50	505-012-020
12 x 3	10,191	10,415	7,8	3 000	2,25	505-012-030
14 x 3	12,191	12,415	9,8	1 000	1,04	505-014-010
14 x 3	12,191	12,415	9,8	2 000	2,08	505-014-020
14 x 3	12,191	12,415	9,8	3 000	3,12	505-014-030
16 x 4	13,640	13,905	10,8	1 000	1,2	505-016-010
16 x 4	13,640	13,905	10,8	2 000	2,4	505-016-020
16 x 4	13,640	13,905	10,8	3 000	3,6	505-016-030
18 x 4	15,640	15,905	12,8	1 000	1,58	505-018-010
18 x 4	15,640	15,905	12,8	2 000	3,16	505-018-020
18 x 4	15,640	15,905	12,8	3 000	4,74	505-018-030
20 x 4	17,640	17,905	14,8	1 000	2,0	505-020-010
20 x 4	17,640	17,905	14,8	2 000	4,0	505-020-020
20 x 4	17,640	17,905	14,8	3 000	6,0	505-020-030
22 x 5	19,114	19,394	15,5	1 000	2,23	505-022-010
22 x 5	19,114	19,394	15,5	2 000	4,46	505-022-020
22 x 5	19,114	19,394	15,5	3 000	6,69	505-022-030
24 x 5	21,094	21,394	17,5	1 000	2,7	505-024-010
24 x 5	21,094	21,394	17,5	2 000	5,4	505-024-020
24 x 5	21,094	21,394	17,5	3 000	8,1	505-024-030
26 x 5	23,094	23,394	19,5	1 000	3,26	505-026-010
26 x 5	23,094	23,394	19,5	2 000	6,52	505-026-020
26 x 5	23,094	23,394	19,5	3 000	9,78	505-026-030
28 x 5	25,094	25,394	21,5	1 000	3,85	505-028-010
28 x 5	25,094	25,394	21,5	2 000	7,70	505-028-020
28 x 5	25,094	25,394	21,5	3 000	11,55	505-028-030
30 x 6	26,547	26,882	21,9	1 000	4,5	505-030-010
30 x 6	26,547	26,882	21,9	2 000	9,0	505-030-020
30 x 6	26,547	26,882	21,9	3 000	13,5	505-030-030

Steigungsgenauigkeit
 Geradheit

0,1/300 mm
 0,3/300 mm

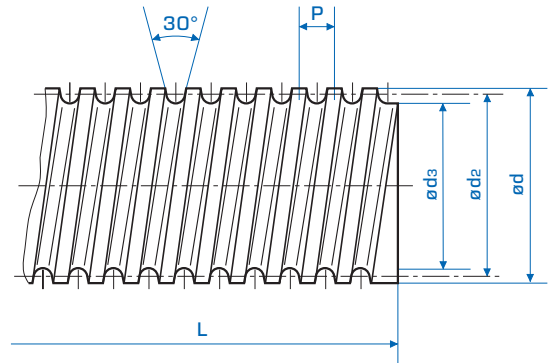
Lead tolerance
Straightness

Trapezgewindespindeln gerollt linksgängig

Lead screws rolled finish left hand

DIN 103
 Quality 7e
 Steel: 1.0501 (C35)

DIN 103
 Qualität 7e
 Stahl: 1.0501 (C35)



Tr d x p	d _{2 min}	d _{2 max}	d _{3 min}	L	[kg]	Bestell Nr. Part No.
32 x 6	28,547	28,882	23,9	1 000	5,18	505-032-010
32 x 6	28,547	28,882	23,9	2 000	10,36	505-032-020
32 x 6	28,547	28,882	23,9	3 000	15,54	505-032-030
36 x 6	32,547	32,882	27,9	1 000	6,7	505-036-010
36 x 6	32,547	32,882	27,9	2 000	13,4	505-036-020
36 x 6	32,547	32,882	27,9	3 000	20,1	505-036-030
40 x 7	36,020	36,375	30,5	1 000	8,0	505-040-010
40 x 7	36,020	36,375	30,5	2 000	16,0	505-040-020
40 x 7	36,020	36,375	30,5	3 000	24,0	505-040-030
44 x 7	40,020	40,375	34,5	1 000	9,87	505-044-010
44 x 7	40,020	40,375	34,5	2 000	19,74	505-044-020
44 x 7	40,020	40,375	34,5	3 000	29,61	505-044-030
48 x 8	43,468	43,868	37,8	1 000	11,95	505-048-010
48 x 8	43,468	43,868	37,8	2 000	23,90	505-048-020
48 x 8	43,468	43,868	37,8	3 000	35,85	505-048-030
50 x 8	45,468	45,868	39,3	1 000	13,0	505-050-010
50 x 8	45,468	45,868	39,3	2 000	26,0	505-050-020
50 x 8	45,468	45,868	39,3	3 000	39,0	505-050-030
60 x 9	54,935	55,360	48,1	1 000	18,0	505-060-010
60 x 9	54,935	55,360	48,1	2 000	36,0	505-060-020
60 x 9	54,935	55,360	48,1	3 000	54,0	505-060-030

Steigungsgenauigkeit
 Geradheit

0,1/300 mm
 0,3/300 mm

Lead tolerance
Straightness

Trapezgewindespindeln gewirbelt rechtsgängig

Lead screws whirled finish right hand

DIN 103
 Quality 7e
 Steel: **1.0715**
(9 S Mn 28 K)

DIN 103
 Qualität: 7e
 Stahl: 1.0715 (9 S Mn 28 K)

Tr d x p	d _{2 min}	d _{2 max}	d _{3 min}	L	[kg]	Bestell Nr. Part No.
10 x 3	8,191	8,415	6,14	1 000	0,45	501-010-010
10 x 3	8,191	8,415	6,14	2 000	0,90	501-010-020
10 x 3	8,191	8,415	6,14	3 000	1,35	501-010-030
12 x 3	10,191	10,415	8,14	1 000	0,75	501-012-010
12 x 3	10,191	10,415	8,14	2 000	1,50	501-012-020
12 x 3	10,191	10,415	8,14	3 000	2,25	501-012-030
14 x 3	12,191	12,415	10,14	1 000	0,96	501-014-010
14 x 3	12,191	12,415	10,14	2 000	1,92	501-014-020
14 x 3	12,191	12,415	10,14	3 000	2,88	501-014-030
16 x 4	13,640	13,905	11,07	1 000	1,2	501-016-010
16 x 4	13,640	13,905	11,07	2 000	2,4	501-016-020
16 x 4	13,640	13,905	11,07	3 000	3,6	501-016-030
18 x 4	15,640	15,905	13,07	1 000	1,58	501-018-010
18 x 4	15,640	15,905	13,07	2 000	3,16	501-018-020
18 x 4	15,640	15,905	13,07	3 000	4,74	501-018-030
20 x 4	17,640	17,905	15,18	1 000	2,0	501-020-010
20 x 4	17,640	17,905	15,18	2 000	4,0	501-020-020
20 x 4	17,640	17,905	15,18	3 000	6,0	501-020-030
22 x 5	19,114	19,394	16,04	1 000	2,35	501-022-010
22 x 5	19,114	19,394	16,04	2 000	4,70	501-022-020
22 x 5	19,114	19,394	16,04	3 000	7,05	501-022-030
24 x 5	21,094	21,394	18,02	1 000	2,7	501-024-010
24 x 5	21,094	21,394	18,02	2 000	5,4	501-024-020
24 x 5	21,094	21,394	18,02	3 000	8,1	501-024-030
26 x 5	23,094	23,394	20,02	1 000	3,26	501-026-010
26 x 5	23,094	23,394	20,02	2 000	6,52	501-026-020
26 x 5	23,094	23,394	20,02	3 000	9,78	501-026-030
28 x 5	25,094	25,394	22,02	1 000	3,85	501-028-010
28 x 5	25,094	25,394	22,02	2 000	7,70	501-028-020
28 x 5	25,094	25,394	22,02	3 000	11,55	501-028-030

Steigungsgenauigkeit
 Geradheit

0,05/300 mm
 0,3/300 mm

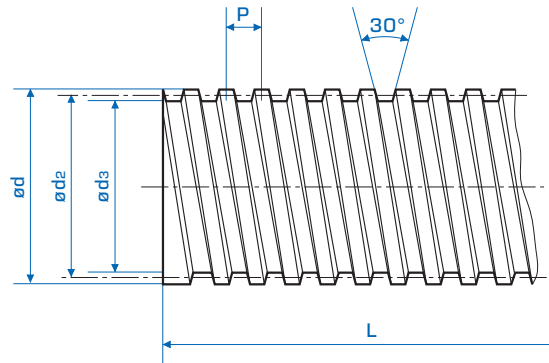
Lead tolerance
Straightness

Trapezgewindespindeln gewirbelt rechtsgängig

Lead screws whirled finish right hand

DIN 103
 Quality 7e
 Steel: **1.0715**
 (9 S Mn 28 K)

DIN 103
 Qualität 7e
 Stahl: 1.0715 (9 S Mn 28 K)



Tr d x p	d _{2 min}	d _{2 max}	d _{3 min}	L	[kg]	Bestell Nr. Part No.
30 x 6	26,547	26,882	22,46	1 000	4,5	501-030-010
30 x 6	26,547	26,882	22,46	2 000	9,0	501-030-020
30 x 6	26,547	26,882	22,46	3 000	13,5	501-030-030
32 x 6	28,547	28,882	24,46	1 000	5,13	501-032-010
32 x 6	28,547	28,882	24,46	2 000	10,26	501-032-020
32 x 6	28,547	28,882	24,46	3 000	15,39	501-032-030
36 x 6	32,547	32,882	28,46	1 000	6,7	501-036-010
36 x 6	32,547	32,882	28,46	2 000	13,4	501-036-020
36 x 6	32,547	32,882	28,46	3 000	20,1	501-036-030
40 x 7	36,020	36,375	31,43	1 000	8,0	501-040-010
40 x 7	36,020	36,375	31,43	2 000	16,0	501-040-020
40 x 7	36,020	36,375	31,43	3 000	24,0	501-040-030
44 x 7	40,020	40,375	35,43	1 000	9,87	501-044-010
44 x 7	40,020	40,375	35,43	2 000	19,74	501-044-020
44 x 7	40,020	40,375	35,43	3 000	29,61	501-044-030
48 x 8	43,468	43,868	38,37	1 000	11,95	501-048-010
48 x 8	43,468	43,868	38,37	2 000	23,90	501-048-020
48 x 8	43,468	43,868	38,37	3 000	35,85	501-048-030
50 x 8	45,468	45,868	40,37	1 000	13,0	501-050-010
50 x 8	45,468	45,868	40,37	2 000	26,0	501-050-020
50 x 8	45,468	45,868	40,37	3 000	39,0	501-050-030
60 x 9	54,935	55,360	49,33	1 000	18,0	501-060-010
60 x 9	54,935	55,360	49,33	2 000	36,0	501-060-020
60 x 9	54,935	55,360	49,33	3 000	54,0	501-060-030
70 x 10	64,425	64,850	58,32	1 000	26,0	501-070-010
70 x 10	64,425	64,850	58,32	2 000	52,0	501-070-020
70 x 10	64,425	64,850	58,32	3 000	78,0	501-070-030

Steigungsgenauigkeit
 Geradheit

0,05/300 mm
 0,3/300 mm

Lead tolerance
Straightness

Trapezgewindespindeln gewirbelt linksgängig

Lead screws whirled finish left hand

DIN 103
 Quality 7e
 Steel: **1.0715**
(9 S Mn 28 K)

DIN 103
 Qualität 7e
 Stahl: 1.0715 (9 S Mn 28 K)

Tr d x p	d _{2 min}	d _{2 max}	d _{3 min}	L	[kg]	Bestell Nr. Part No.
10 x 3	8,191	8,415	6,14	1 000	0,45	506-010-010
10 x 3	8,191	8,415	6,14	2 000	0,90	506-010-020
10 x 3	8,191	8,415	6,14	3 000	1,35	506-010-030
12 x 3	10,191	10,415	8,14	1 000	0,75	506-012-010
12 x 3	10,191	10,415	8,14	2 000	1,50	506-012-020
12 x 3	10,191	10,415	8,14	3 000	2,25	506-012-030
14 x 3	12,191	12,415	10,14	1 000	0,96	506-014-010
14 x 3	12,191	12,415	10,14	2 000	1,92	506-014-020
14 x 3	12,191	12,415	10,14	3 000	2,88	506-014-030
16 x 4	13,640	13,905	11,07	1 000	1,2	506-016-010
16 x 4	13,640	13,905	11,07	2 000	2,4	506-016-020
16 x 4	13,640	13,905	11,07	3 000	3,6	506-016-030
18 x 4	15,640	15,905	13,07	1 000	1,58	506-018-010
18 x 4	15,640	15,905	13,07	2 000	3,16	506-018-020
18 x 4	15,640	15,905	13,07	3 000	4,74	506-018-030
20 x 4	17,640	17,905	15,18	1 000	2,0	506-020-010
20 x 4	17,640	17,905	15,18	2 000	4,0	506-020-020
20 x 4	17,640	17,905	15,18	3 000	6,0	506-020-030
22 x 5	19,114	19,394	16,04	1 000	2,35	506-022-010
22 x 5	19,114	19,394	16,04	2 000	4,70	506-022-020
22 x 5	19,114	19,394	16,04	3 000	7,05	506-022-030
24 x 5	21,094	21,394	18,02	1 000	2,7	506-024-010
24 x 5	21,094	21,394	18,02	2 000	5,4	506-024-020
24 x 5	21,094	21,394	18,02	3 000	8,1	506-024-030
26 x 5	23,094	23,394	20,02	1 000	3,26	506-026-010
26 x 5	23,094	23,394	20,02	2 000	6,52	506-026-020
26 x 5	23,094	23,394	20,02	3 000	9,78	506-026-030
28 x 5	25,094	25,394	22,02	1 000	3,85	506-028-010
28 x 5	25,094	25,394	22,02	2 000	7,70	506-028-020
28 x 5	25,094	25,394	22,02	3 000	11,55	506-028-030

Steigungsgenauigkeit
Geradheit

0,05/300 mm
0,3/300 mm

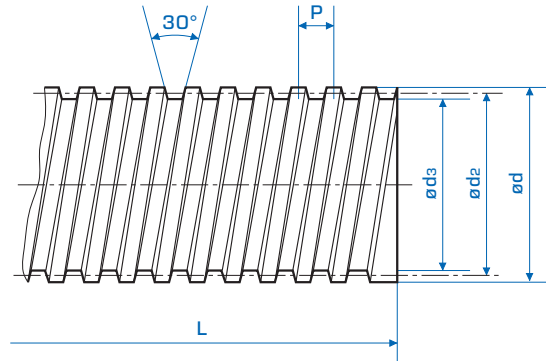
Lead tolerance
Straightness

Trapezgewindespindeln gewirbelt linksgängig

Lead screws whirled finish left hand

DIN 103
 Quality 7e
 Steel: 1.0715
 (9 S Mn 28 K)

DIN 103
 Qualität 7e
 Stahl: 1.0715 (9 S Mn 28 K)



Tr d x p	d _{2 min}	d _{2 max}	d _{3 min}	L	[kg]	Bestell Nr. Part No.
30 x 6	26,547	26,882	22,46	1 000	4,5	506-030-010
30 x 6	26,547	26,882	22,46	2 000	9,0	506-030-020
30 x 6	26,547	26,882	22,46	3 000	13,5	506-030-030
32 x 6	28,547	28,882	24,46	1 000	5,13	506-032-010
32 x 6	28,547	28,882	24,46	2 000	10,26	506-032-020
32 x 6	28,547	28,882	24,46	3 000	15,39	506-032-030
36 x 6	32,547	32,882	28,46	1 000	6,7	506-036-010
36 x 6	32,547	32,882	28,46	2 000	13,4	506-036-020
36 x 6	32,547	32,882	28,46	3 000	20,1	506-036-030
40 x 7	36,020	36,375	31,43	1 000	8,0	506-040-010
40 x 7	36,020	36,375	31,43	2 000	16,0	506-040-020
40 x 7	36,020	36,375	31,43	3 000	24,0	506-040-030
44 x 7	40,020	40,375	35,43	1 000	9,87	506-044-010
44 x 7	40,020	40,375	35,43	2 000	19,74	506-044-020
44 x 7	40,020	40,375	35,43	3 000	29,61	506-044-030
48 x 8	43,468	43,868	38,37	1 000	11,95	506-048-010
48 x 8	43,468	43,868	38,37	2 000	23,90	506-048-020
48 x 8	43,468	43,868	38,37	3 000	35,85	506-048-030
50 x 8	45,468	45,868	40,37	1 000	13,0	506-050-010
50 x 8	45,468	45,868	40,37	2 000	26,0	506-050-020
50 x 8	45,468	45,868	40,37	3 000	39,0	506-050-030
60 x 9	54,935	55,360	49,33	1 000	18,0	506-060-010
60 x 9	54,935	55,360	49,33	2 000	36,0	506-060-020
60 x 9	54,935	55,360	49,33	3 000	54,0	506-060-030
70 x10	64,425	64,850	58,32	1 000	26,0	506-070-010
70 x10	64,425	64,850	58,32	2 000	52,0	506-070-020
70 x10	64,425	64,850	58,32	3 000	78,0	506-070-030

Steigungsgenauigkeit
 Geradheit

0,05/300 mm
 0,3/300 mm

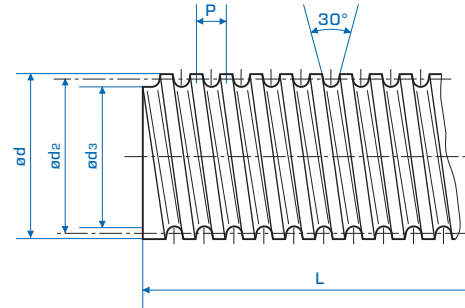
Lead tolerance
Straightness

Rostfreie Trapezgewindespindeln gerollt rechtsgängig

Stainless steel lead screws rolled finish right hand

DIN 103
 Quality 7e
 Steel: 1.4306/
 1.4404

DIN 103
 Qualität 7e
 Stahl: 1.4306/1.4404



Tr d x p	d _{2 min}	d _{2 max}	d _{3 min}	L	[kg]	Bestell Nr. Part No.
12 x 3	10,191	10,415	7,8	1 000	0,75	500-012-210
12 x 3	10,191	10,415	7,8	2 000	1,50	500-012-220
12 x 3	10,191	10,415	7,8	3 000	2,25	500-012-230
16 x 4	13,640	13,905	10,8	1 000	1,2	500-016-210
16 x 4	13,640	13,905	10,8	2 000	2,4	500-016-220
16 x 4	13,640	13,905	10,8	3 000	3,6	500-016-230
18 x 4	15,640	15,905	12,8	1 000	1,58	500-018-210
18 x 4	15,640	15,905	12,8	2 000	3,16	500-018-220
18 x 4	15,640	15,905	12,8	3 000	4,74	500-018-230
20 x 4	17,640	17,905	14,8	1 000	2,0	500-020-210
20 x 4	17,640	17,905	14,8	2 000	4,0	500-020-220
20 x 4	17,640	17,905	14,8	3 000	6,0	500-020-230
24 x 5	21,094	21,394	17,5	1 000	2,7	500-024-210
24 x 5	21,094	21,394	17,5	2 000	5,4	500-024-220
24 x 5	21,094	21,394	17,5	3 000	8,1	500-024-230
26 x 5	23,094	23,394	19,5	1 000	3,26	500-026-210
26 x 5	23,094	23,394	19,5	2 000	6,52	500-026-220
26 x 5	23,094	23,394	19,5	3 000	9,78	500-026-230
28 x 5	25,094	25,394	21,5	1 000	3,85	500-028-210
28 x 5	25,094	25,394	21,5	2 000	7,70	500-028-220
28 x 5	25,094	25,394	21,5	3 000	11,55	500-028-230
30 x 6	26,547	26,882	21,9	1 000	4,5	500-030-210
30 x 6	26,547	26,882	21,9	2 000	9,0	500-030-220
30 x 6	26,547	26,882	21,9	3 000	13,5	500-030-230
32 x 6	28,547	28,882	23,9	1 000	5,18	500-032-210
32 x 6	28,547	28,882	23,9	2 000	10,36	500-032-220
32 x 6	28,547	28,882	23,9	3 000	15,54	500-032-230
36 x 6	32,547	32,882	27,9	1 000	6,7	500-036-210
36 x 6	32,547	32,882	27,9	2 000	13,4	500-036-220
36 x 6	32,547	32,882	27,9	3 000	20,1	500-036-230
40 x 7	36,020	36,375	30,5	1 000	8,0	500-040-210
40 x 7	36,020	36,375	30,5	2 000	16,0	500-040-220
40 x 7	36,020	36,375	30,5	3 000	24,0	500-040-230
50 x 8	45,468	45,868	39,3	1 000	13,0	500-050-210
50 x 8	45,468	45,868	39,3	2 000	26,0	500-050-220
50 x 8	45,468	45,868	39,3	3 000	39,0	500-050-230

Steigungsgenauigkeit
Geradheit

0,3/300 mm
0,8/300 mm

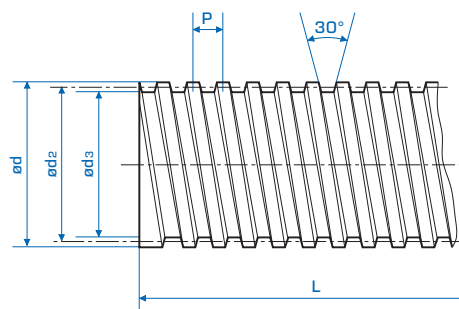
Lead tolerance
Straightness

Rostfreie Trapezgewindespindeln gewirbelt rechtsgängig

Stainless steel lead screws whirled finish right hand

DIN 103
 Quality 7e
 Steel: 1.4305
 (X8 CrNiS 18-9)

DIN 103
 Qualität 7e
 Stahl: 1.4305 (X8 CrNiS 18-9)



Tr d x p	d ₂ min	d ₂ max	d ₃ min	L	[kg]	Bestell Nr. Part No.
12 x 3	10,191	10,415	8,14	1 000	0,75	501-012-210
12 x 3	10,191	10,415	8,14	2 000	1,50	501-012-220
12 x 3	10,191	10,415	8,14	3 000	2,25	501-012-230
16 x 4	13,640	13,905	11,07	1 000	1,2	501-016-210
16 x 4	13,640	13,905	11,07	2 000	2,4	501-016-220
16 x 4	13,640	13,905	11,07	3 000	3,6	501-016-230
20 x 4	17,640	17,905	15,18	1 000	2,0	501-020-210
20 x 4	17,640	17,905	15,18	2 000	4,0	501-020-220
20 x 4	17,640	17,905	15,18	3 000	6,0	501-020-230
24 x 5	21,094	21,394	18,02	1 000	2,7	501-024-210
24 x 5	21,094	21,394	18,02	2 000	5,4	501-024-220
24 x 5	21,094	21,394	18,02	3 000	8,1	501-024-230
30 x 6	26,547	26,882	22,46	1 000	4,5	501-030-210
30 x 6	26,547	26,882	22,46	2 000	9,0	501-030-220
30 x 6	26,547	26,882	22,46	3 000	13,5	501-030-230
32 x 6	28,547	28,882	24,46	1 000	5,18	501-032-210
32 x 6	28,547	28,882	24,46	2 000	10,36	501-032-220
32 x 6	28,547	28,882	24,46	3 000	15,54	501-032-230
36 x 6	32,547	32,882	28,46	1 000	6,7	501-036-210
36 x 6	32,547	32,882	28,46	2 000	13,4	501-036-220
36 x 6	32,547	32,882	28,46	3 000	20,1	501-036-230
40 x 7	36,020	36,375	31,43	1 000	8,0	501-040-210
40 x 7	36,020	36,375	31,43	2 000	16,0	501-040-220
40 x 7	36,020	36,375	31,43	3 000	24,0	501-040-230
50 x 8	45,468	45,868	40,37	1 000	13,0	501-050-210
50 x 8	45,468	45,868	40,37	2 000	26,0	501-050-220
50 x 8	45,468	45,868	40,37	3 000	39,0	501-050-230

Steigungsgenauigkeit
 Geradheit

0,05/300 mm
 0,3/300 mm

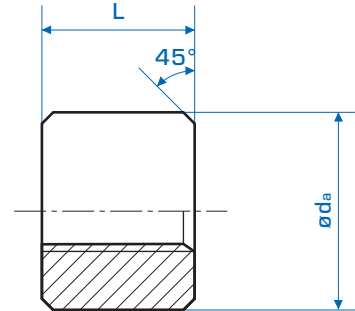
Lead tolerance
Straightness

Trapezgewindemuttern rechtsgängig

Threaded nuts right hand

DIN 103
Quality 8 H

DIN 103
Qualität 8H



Gewindemuttern-Rohlinge, rund

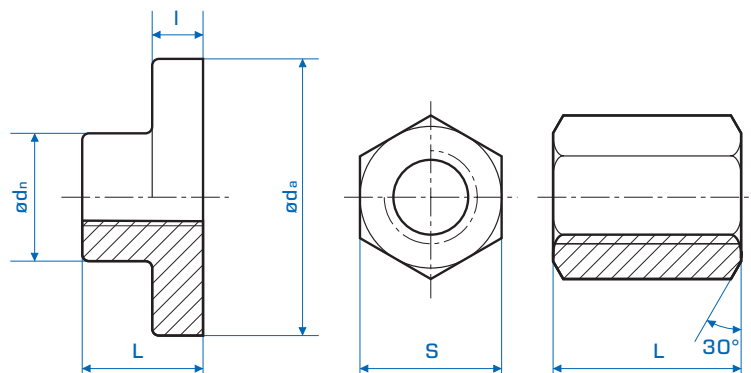
cast finish, round

Tr d x p	d _a	L	Bestell Nr.				L	Part No.	
			● 1.0727 St.	● PETP synt. mat.	● GG 25 cast iron	● Rg 7 Bronze		● 1.0727 St	
10 x 3	22	20	511-010-100				15	511-010-110	
12 x 3	26	24	511-012-100	511-012-800	511-012-500	511-012-600	18	511-012-110	
14 x 3	30	28	511-014-100		511-014-500	511-014-600	21	511-014-110	
16 x 4	36	32	511-016-100	511-016-800	511-016-500	511-016-600	24	511-016-110	
18 x 4	40	36	511-018-100		511-018-500	511-018-600	27	511-018-110	
20 x 4	45	40	511-020-100	511-020-800	511-020-500	511-020-600	30	511-020-110	
22 x 5	45	44	511-022-100		511-022-500	511-022-600	33	511-022-110	
24 x 5	50	48	511-024-100	511-024-800	511-024-500	511-024-600	36	511-024-110	
26 x 5	55	52	511-026-100		511-026-500	511-026-600	39	511-026-110	
28 x 5	60	56	511-028-100		511-028-500	511-028-600	42	511-028-110	
30 x 6	60	60	511-030-100	511-030-800	511-030-500	511-030-600	45	511-030-110	
32 x 6	60	64	511-032-100		511-032-500	511-032-600	48	511-032-110	
36 x 6	75	72	511-036-100	511-036-800	511-036-500	511-036-600	54	511-036-110	
40 x 7	80	80	511-040-100	511-040-800	511-040-500	511-040-600	60	511-040-110	
44 x 7	80	88	511-044-100		511-044-500	511-044-600	66	511-044-110	
48 x 8	90	96	511-048-100		511-048-500	511-048-600	72	511-048-110	
50 x 8	90	100	511-050-100	511-050-800	511-050-500	511-050-600	75	511-050-110	
60 x 9	100	120	511-060-100		511-060-500	511-060-600	90	511-060-110	
70 x 10	110	140	511-070-100		511-070-500	511-070-600	105	511-070-110	

Trapezgewindemuttern rechtsgängig

Threaded nuts right hand

DIN 103
 Quality 8 H

 DIN 103
 Qualität 8H

Gewindemuttern-Rohlinge
cast finish

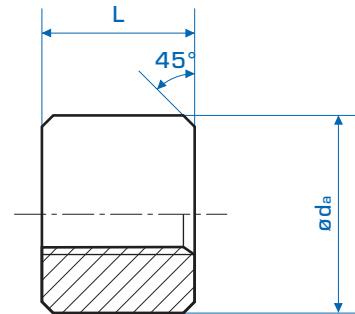
Tr d x p	L	l	d _a	d _n	Flansch/ flange		sechskant/ hexagonal		
					Bestell Nr.	Part No.	L	S	Material
					GG 25 <i>cast iron</i>	Rg 7 <i>Bronze</i>			1.0715 <i>St</i>
10 x 3	15	6	35	20	511-010-570	511-010-670	15	17	511-010-150
12 x 3	20	7	42	24	511-012-570	511-012-670	18	19	511-012-150
14 x 3	24	10	52	30	511-014-570	511-014-670	21	22	511-014-150
16 x 4	24	10	52	30	511-016-570	511-016-670	24	27	511-016-150
18 x 4	26	11	62	38	511-018-570	511-018-670	27	27	511-018-150
20 x 4	26	11	62	38	511-020-570	511-020-670	30	30	511-020-150
22 x 5	33	13	77	50	511-022-570	511-022-670	33	32	511-022-150
24 x 5	33	13	77	50	511-024-570	511-024-670	36	36	511-024-150
26 x 5	33	13	77	50	511-026-570	511-026-670	42	41	511-026-150
28 x 5	48	15	90	58	511-028-570	511-028-670	42	41	511-028-150
30 x 6	48	15	90	58	511-030-570	511-030-670	45	46	511-030-150
32 x 6	60	20	115	80	511-032-570	511-032-670	48	46	511-032-150
36 x 6	60	20	115	80	511-036-570	511-036-670	54	55	511-036-150
40 x 7	65	20	140	80	511-040-570	511-040-670	60	65	511-040-150
44 x 7	65	20	140	80	511-044-570	511-044-670	66	65	511-044-150
48 x 8	70	20	170	90	511-048-570	511-048-670	72	75	511-048-150
50 x 8	70	20	170	90	511-050-570	511-050-670	75	75	511-050-150
60 x 9							90	90	511-060-150
70 x 10							105	90	511-070-150

Trapezgewindemuttern linksgängig

Threaded nuts left hand

DIN 103
Quality 8 H

DIN 103
Qualität 8H



Gewindemuttern-Rohlinge, rund

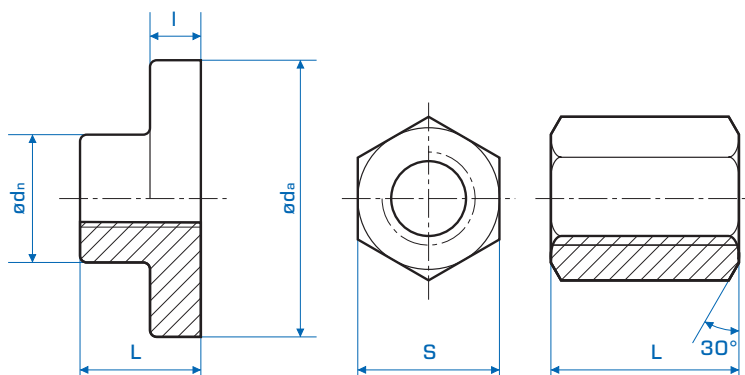
cast finish, round

Tr d x p	d _a	L	Bestell Nr.			L	Part No.
			● 1.0727 St.	● GG 25 <i>cast iron</i>	● Rg 7 <i>Bronze</i>		● 1.0727 St
10 x 3	22	20	516-010-100		516-010-600	15	516-010-110
12 x 3	26	24	516-012-100	516-012-500	516-012-600	18	516-012-110
14 x 3	30	28	516-014-100	516-014-500	516-014-600	21	516-014-110
16 x 4	36	32	516-016-100	516-016-500	516-016-600	24	516-016-110
18 x 4	40	36	516-018-100	516-018-500	516-018-600	27	516-018-110
20 x 4	45	40	516-020-100	516-020-500	516-020-600	30	516-020-110
22 x 5	45	44	516-022-100	516-022-500	516-022-600	33	516-022-110
24 x 5	50	48	516-024-100	516-024-500	516-024-600	36	516-024-110
26 x 5	55	52	516-026-100	516-026-500	516-026-600	39	516-026-110
28 x 5	60	56	516-028-100	516-028-500	516-028-600	42	516-028-110
30 x 6	60	60	516-030-100	516-030-500	516-030-600	45	516-030-110
32 x 6	60	64	516-032-100	516-032-500	516-032-600	48	516-032-110
36 x 6	75	72	516-036-100	516-036-500	516-036-600	54	516-036-110
40 x 7	80	80	516-040-100	516-040-500	516-040-600	60	516-040-110
44 x 7	80	88	516-044-100	516-044-500	516-044-600	66	516-044-110
48 x 8	90	96	516-048-100	516-048-500	516-048-600	72	516-048-110
50 x 8	90	100	516-050-100	516-050-500	516-050-600	75	516-050-110
60 x 9	100	120	516-060-100	516-060-500	516-060-600	90	516-060-110
70 x 10	110	140	516-070-100	516-070-500	516-070-600	105	516-070-110

Trapezgewindemuttern linksgängig

Threaded nuts left hand

DIN 103
 Quality 8 H

 DIN 103
 Qualität 8H

Gewindemuttern-Rohlinge
cast finish

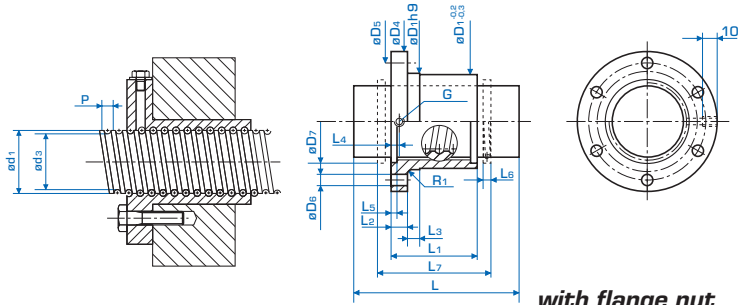
Tr d x p	L	l	d _a	d _n	Flansch/ flange		sechskant/ hexagonal		
					Bestell Nr.		L	S	Part No.
					GG 25 <i>cast iron</i>	Rg 7 <i>Bronze</i>			1.0715 <i>St</i>
10 x 3	15	6	35	20	516-010-570	516-010-670	15	17	516-010-150
12 x 3	20	7	42	24	516-012-570	516-012-670	18	19	516-012-150
14 x 3	24	10	52	30	516-014-570	516-014-670	21	22	516-014-150
16 x 4	24	10	52	30	516-016-570	516-016-670	24	27	516-016-150
18 x 4	26	11	62	38	516-018-570	516-018-670	27	27	516-018-150
20 x 4	26	11	62	38	516-020-570	516-020-670	30	30	516-020-150
22 x 5	33	13	77	50	516-022-570	516-022-670	33	32	516-022-150
24 x 5	33	13	77	50	516-024-570	516-024-670	36	36	516-024-150
26 x 5	33	13	77	50	516-026-570	516-026-670	42	41	516-026-150
28 x 5	48	15	90	58	516-028-570	516-028-670	42	41	516-028-150
30 x 6	48	15	90	58	516-030-570	516-030-670	45	46	516-030-150
32 x 6	60	20	115	80	516-032-570	516-032-670	48	46	516-032-150
36 x 6	60	20	115	80	516-036-570	516-036-670	54	55	516-036-150
40 x 7	65	20	140	80	516-040-570	516-040-670	60	65	516-040-150
44 x 7	65	20	140	80	516-044-570	516-044-670	66	65	516-044-150
48 x 8	70	20	170	90	516-048-570	516-048-670	72	75	516-048-150
50 x 8	70	20	170	90	516-050-570	516-050-670	75	75	516-050-150
60 x 9							90	90	516-060-150
70 x 10							105	90	516-070-150

Kugelgewindetriebe

Ball screws and nuts

Material screw:
 steel with the thread
 induction hardened
Material nut:
 hardened ball bearing
 steel

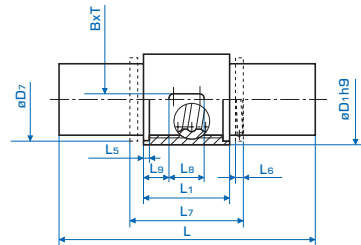
Werkstoff Spindel:
 Vergütungsstahl,
 Kugelaufbahn
 induktiv gehärtet
Werkstoff Mutter:
 Kugellagerstahl,
 gehärtet



mit Flanschmutter

with flange nut

d ₁ x p	Tragzahl/ load				U*	L	D ₁	D ₄	D ₅	D ₆	D ₇	L ₁	L ₂	L ₃	L ₄	L ₅	L ₆	L ₇	G	Bestell Nr.
	dyn.(kN)	stat.	d ₃ ^{±0,2}	Part No.																
16 x 5	0,7	12,7	13,4	3	1000	28	48	38	6	22	44	12	8	6	3	7	52	M6	503-165-371	
20 x 5	0,8	17	17,4	3	1000	32	55	45	7	26	44	12	8	6	3	7	52	M6	503-205-371	
25 x 5	9,5	22,4	22,4	3	1000	38	62	50	7	31	46	14	8	6	3	7	54	M6	503-255-371	
32 x 5	17	49	29,4	5	1000	45	70	58	7	38	59	16	10	6	3	7	67	M6	503-325-371	
40 x 5	19	63,5	37,4	5	1000	53	80	68	7	46	59	16	10	6	3	7	67	M6	503-405-371	
40 x 10	30	70	34,7	3	1000	63	95	78	9	52	73	16	10	8	5	12	87	M8x1	503-401-371	
50 x 10	55	153	44,7	5	1000	72	110	90	11	62	97	18	10	8	5	12	111	M8x1	503-501-371	
63 x 10	60	200	57,7	5	1000	85	125	105	11	74	99	20	10	8	5	12	113	M8x1	503-631-371	
80 x 10	69	260	74,7	5	1000	105	145	125	14	93	101	22	10	8	5	12	115	M8x1	503-801-371	



mit Rundmutter

with round nut

d ₁ x p	Tragzahl/ load				U*	L	D ₁	D ₇	L ₁	L ₅	L ₆	L ₇	L ₈	L ₉	B x T	Keilnut/ keyway	Bestell Nr.
	dyn.(kN)	stat.	d ₃ ^{±0,2}	Part No.													
16 x 5	0,7	12,7	13,4	3	1 000	28	22	34	3	7	42	20	7	5 x 2		503-165-311	
20 x 5	0,8	17	17,4	3	1 000	32	26	34	3	7	42	20	7	5 x 2		503-205-311	
25 x 5	9,5	22,4	22,4	3	1 000	38	31	34	3	7	42	20	7	5 x 2		503-255-311	
32 x 5	17	49	29,4	5	1 000	45	38	45	3	7	53	30	7	6 x 2,5		503-325-311	
40 x 5	19	63,5	37,4	5	1 000	53	46	45	3	7	53	30	7	6 x 2,5		503-405-311	
40 x 10	30	70	34,7	3	1 000	63	52	60	5	12	74	30	15	6 x 2,5		503-401-311	
50 x 10	55	153	44,7	5	1 000	72	62	82	5	12	96	36	23	6 x 2,5		503-501-311	
63 x 10	60	200	57,7	5	1 000	85	74	82	5	12	96	36	23	6 x 2,5		503-631-311	
80 x 10	69	260	74,7	5	1 000	105	93	82	5	12	96	36	23	8 x 3,1		503-801-311	

The WMH ball screw and nut assemblies consist of a right handed, rolled, induction hardened and polished screw with fully annealed screw ends for subsequent machining and a nut. The standard tolerance for the accumulated lead error is 0,2 mm over a 300 mm length. The balls are recirculated in an internal return element from thread to thread. For effective oil and grease sealing wipers are fitted in the nut and during assembly or removal of the nut care must be taken to prevent the balls dropping out as this could damage the screw and nut. Our ball screw and nut assemblies can be delivered in special lengths (up to 5 600 mm) and with suitable for machining screw ends.

For special application free from backlash preloaded units (ball screw/flange nut - preload discround nut) can be supplied.

Die WMH Kugelgewindetriebe bestehen aus einer rechtsgängigen, gerollten, induktiv gehärteten und polierten Gewindespindel mit weichgeglühten Spindelenden zum Weiterbearbeiten sowie aus einer Kugelgewindemutter.

Die Steigungsgenauigkeit der Spindel beträgt 0,2/300 mm. Die Kugeln werden in einem internen Umlenkelement von Gang zu Gang zurückgeführt. Öl- und fettichte Abstreifer sind in die Mutter eingeklebt. Bei der Demontage bzw. Montage dürfen auf keinen Fall Kugeln herausfallen. Dies führt zu einer Beschädigung der Spindel-Mutter-Einheit. (Montagehülse verwenden!)

Unsere Kugelgewindespindeln können auch in Sonderlängen (bis 5 600 mm) sowie mit fertig bearbeiteten Spindelenden nach Kundenwunsch gegen Aufpreis geliefert werden.

Für besondere Einbaufälle können spielfrei vorgespannte Einheiten (Kugelgewindespindel/ Flanschmutter - Vorspannscheibe - Rund-Kugelgewindemutter) geliefert werden.