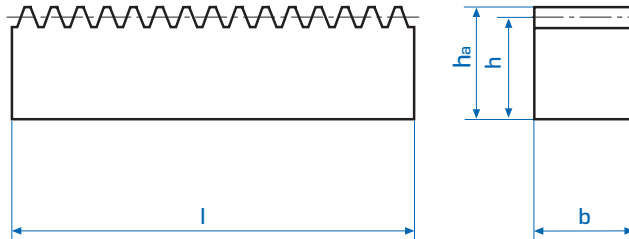


Zahnstangen

Racks

Steel: 1.0503 [C 45]
 straight teeth,
 pressure angle 20°

Stahl: 1.0503 [C 45]
 geradverzahnt,
 Eingriffswinkel 20°



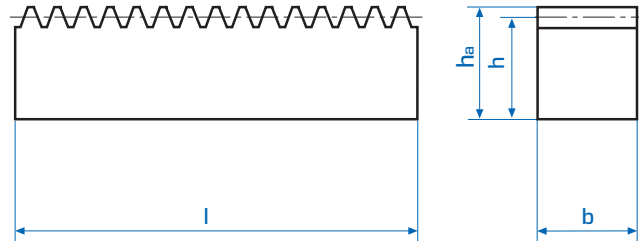
| Modul Module | h_a | h | b_{h11} | l | [kg] | Bestell Nr. Part No. |
|-----------------|------------------|----------------|-----------|-------|-------|-------------------------|
| 1,0 | $9,8 \pm 0,10$ | $8,8 - 0,10$ | 10 | 250 | 0,17 | 140-010-002 |
| 1,0 | $9,8 \pm 0,10$ | $8,8 - 0,10$ | 10 | 500 | 0,34 | 140-010-005 |
| 1,0 | $9,8 \pm 0,15$ | $8,8 - 0,15$ | 10 | 1 000 | 0,68 | 140-010-010 |
| 1,5 | $14,8 \pm 0,10$ | $13,3 - 0,10$ | 15 | 250 | 0,39 | 140-015-002 |
| 1,5 | $14,8 \pm 0,10$ | $13,3 - 0,10$ | 15 | 500 | 0,78 | 140-015-005 |
| 1,5 | $14,8 \pm 0,15$ | $13,3 - 0,15$ | 15 | 1 000 | 1,55 | 140-015-010 |
| 1,5 | $14,8 \pm 0,15$ | $13,3 - 0,15$ | 15 | 2 000 | 3,10 | 140-015-020 |
| 2,0 | $19,75 \pm 0,10$ | $17,75 - 0,10$ | 20 | 500 | 1,40 | 140-020-005 |
| 2,0 | $19,75 \pm 0,15$ | $17,75 - 0,15$ | 20 | 1 000 | 2,80 | 140-020-010 |
| 2,0 | $19,75 \pm 0,25$ | $17,75 - 0,25$ | 20 | 2 000 | 5,60 | 140-020-020 |
| 2,5 | $24,75 \pm 0,10$ | $22,25 - 0,10$ | 25 | 500 | 2,10 | 140-025-005 |
| 2,5 | $24,75 \pm 0,15$ | $22,25 - 0,15$ | 25 | 1 000 | 4,20 | 140-025-010 |
| 2,5 | $24,75 \pm 0,25$ | $22,25 - 0,25$ | 25 | 2 000 | 8,40 | 140-025-020 |
| 3,0 | $29,75 \pm 0,10$ | $26,75 - 0,10$ | 30 | 500 | 3,10 | 140-030-005 |
| 3,0 | $29,75 \pm 0,20$ | $26,75 - 0,20$ | 30 | 1 000 | 6,20 | 140-030-010 |
| 3,0 | $29,75 \pm 0,30$ | $26,75 - 0,30$ | 30 | 2 000 | 12,40 | 140-030-020 |
| 4,0 | $39,70 \pm 0,10$ | $35,70 - 0,10$ | 40 | 500 | 5,50 | 140-040-005 |
| 4,0 | $39,70 \pm 0,20$ | $35,70 - 0,20$ | 40 | 1 000 | 11,00 | 140-040-010 |
| 4,0 | $39,70 \pm 0,30$ | $35,70 - 0,30$ | 40 | 2 000 | 22,00 | 140-040-020 |
| 5,0 | $49,70 \pm 0,10$ | $44,70 - 0,10$ | 50 | 500 | 8,60 | 140-050-005 |
| 5,0 | $49,70 \pm 0,20$ | $44,70 - 0,20$ | 50 | 1 000 | 17,20 | 140-050-010 |
| 5,0 | $49,70 \pm 0,30$ | $44,70 - 0,30$ | 50 | 2 000 | 34,40 | 140-050-020 |
| 6,0 | $59,65 \pm 0,10$ | $53,65 - 0,10$ | 60 | 500 | 12,30 | 140-060-005 |
| 6,0 | $59,65 \pm 0,20$ | $53,65 - 0,20$ | 60 | 1 000 | 24,50 | 140-060-010 |
| 6,0 | $59,65 \pm 0,30$ | $53,65 - 0,30$ | 60 | 2 000 | 49,00 | 140-060-020 |
| 8,0 | $79,60 \pm 0,30$ | $71,60 - 0,30$ | 80 | 500 | 21,40 | 140-080-005 |
| 8,0 | $79,60 \pm 0,40$ | $71,60 - 0,40$ | 80 | 1 000 | 42,70 | 140-080-010 |
| 8,0 | $79,60 \pm 0,50$ | $71,60 - 0,50$ | 80 | 2 000 | 85,40 | 140-080-020 |

Zahnstangen

Racks

Steel: 1.0503 [C 45]
 straight teeth,
 pressure angle 20°

Stahl: 1.0503 [C 45]
 geradverzahnt,
 Eingriffswinkel 20°



| Modul Module | h_a | h | b_{h11} | l | [kg] | Bestell Nr. Part No. |
|-----------------|--------------|--------------|-----------|-------|-------|-------------------------|
| 1,591 p = 5 mm | 14,80 ± 0,10 | 13,21 - 0,10 | 15 | 250 | 0,39 | 140-016-002 |
| 1,591 p = 5 mm | 14,80 ± 0,10 | 13,21 - 0,10 | 15 | 500 | 0,78 | 140-016-005 |
| 1,591 p = 5 mm | 14,80 ± 0,15 | 13,21 - 0,15 | 15 | 1 000 | 1,55 | 140-016-010 |
| 1,591 p = 5 mm | 14,80 ± 0,15 | 13,21 - 0,15 | 15 | 2 000 | 3,10 | 140-016-020 |
| 3,183 p = 10 mm | 29,70 ± 0,10 | 26,52 - 0,10 | 30 | 250 | 1,55 | 140-031-002 |
| 3,183 p = 10 mm | 29,70 ± 0,15 | 26,52 - 0,15 | 30 | 500 | 3,10 | 140-031-005 |
| 3,183 p = 10 mm | 29,70 ± 0,20 | 26,52 - 0,20 | 30 | 1 000 | 6,20 | 140-031-010 |
| 3,183 p = 10 mm | 29,70 ± 0,30 | 26,52 - 0,30 | 30 | 2 000 | 12,40 | 140-031-020 |

WMH-Standard racks made out of material Steel 1.0503 [C 45] are manufactured according to DIN 178 in tooth quality 9 according to DIN 3962, 3963 and 3967.

WMH-Standard-Zahnstangen werden mit Überkopfschneider aus Vierkant-blankstahl 1.0503 [C 45] nach DIN 178 in Verzahnungsqualität 9 nach DIN 3962, 3963 und 3967 hergestellt.

Sollten Sie andere Abmessungen benötigen, helfen Ihnen unsere Konstrukteure gerne weiter.

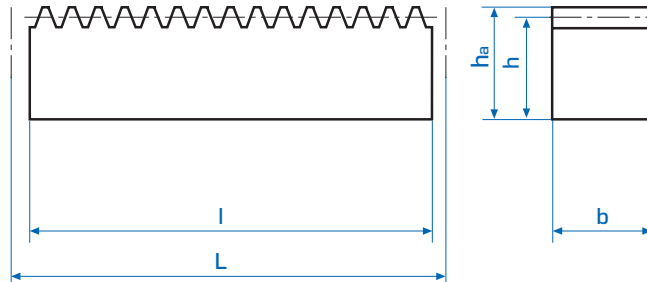
If you need other dimensions - please contact our engineering department.

Zahnstangen für fortl. Montage

Racks for continuous mounting

Steel: 1.0503 [C 45]
 straight teeth,
 pressure angle 20°

Stahl: 1.0503 [C 45]
 geradverzahnt,
 Eingriffswinkel 20°



| Modul Module | z* | h _a | h | b _{h11} | theor. L | l | ± | [kg] | Bestell Nr. Part No. |
|-----------------|-----|----------------|--------------|------------------|-------------|---------|-----|-------|-------------------------|
| 1,0 | 80 | 9,8 ± 0,10 | 8,8 - 0,10 | 10 | 251,327 | 250,8 | 0,3 | 0,17 | 146-010-002 |
| 1,0 | 159 | 9,8 ± 0,10 | 8,8 - 0,10 | 10 | 499,513 | 499,0 | 0,3 | 0,34 | 146-010-005 |
| 1,0 | 318 | 9,8 ± 0,15 | 8,8 - 0,15 | 10 | 999,026 | 998,5 | 0,3 | 0,68 | 146-010-010 |
| 1,5 | 53 | 14,8 ± 0,10 | 13,3 - 0,10 | 15 | 249,757 | 249,3 | 0,3 | 0,39 | 146-015-002 |
| 1,5 | 106 | 14,8 ± 0,10 | 13,3 - 0,10 | 15 | 499,513 | 499,1 | 0,3 | 0,78 | 146-015-005 |
| 1,5 | 212 | 14,8 ± 0,15 | 13,3 - 0,15 | 15 | 999,026 | 998,6 | 0,3 | 1,55 | 146-015-010 |
| 1,5 | 424 | 14,8 ± 0,15 | 13,3 - 0,15 | 15 | 1 998,053 | 1 997,6 | 0,3 | 3,10 | 146-015-020 |
| 2,0 | 40 | 19,75 ± 0,10 | 17,75 - 0,10 | 20 | 251,327 | 250,8 | 0,3 | 0,70 | 146-020-002 |
| 2,0 | 80 | 19,75 ± 0,10 | 17,75 - 0,10 | 20 | 502,655 | 502,1 | 0,3 | 1,40 | 146-020-005 |
| 2,0 | 159 | 19,75 ± 0,15 | 17,75 - 0,15 | 20 | 999,026 | 998,5 | 0,3 | 2,80 | 146-020-010 |
| 2,0 | 318 | 19,75 ± 0,25 | 17,75 - 0,25 | 20 | 1 998,053 | 1 997,5 | 0,3 | 5,60 | 146-020-020 |
| 2,5 | 32 | 24,75 ± 0,10 | 22,25 - 0,10 | 25 | 251,327 | 250,8 | 0,3 | 1,10 | 146-025-002 |
| 2,5 | 64 | 24,75 ± 0,10 | 22,25 - 0,10 | 25 | 502,655 | 502,1 | 0,3 | 2,10 | 146-025-005 |
| 2,5 | 127 | 24,75 ± 0,15 | 22,25 - 0,15 | 25 | 997,456 | 996,9 | 0,3 | 4,20 | 146-025-010 |
| 2,5 | 255 | 24,75 ± 0,25 | 22,25 - 0,25 | 25 | 2 002,765 | 2 002,3 | 0,3 | 8,40 | 146-025-020 |
| 3,0 | 27 | 29,75 ± 0,10 | 26,75 - 0,10 | 30 | 254,469 | 253,8 | 0,3 | 1,60 | 146-030-002 |
| 3,0 | 53 | 29,75 ± 0,10 | 26,75 - 0,10 | 30 | 499,513 | 498,9 | 0,3 | 3,10 | 146-030-005 |
| 3,0 | 106 | 29,75 ± 0,20 | 26,75 - 0,20 | 30 | 999,026 | 998,4 | 0,3 | 6,20 | 146-030-010 |
| 3,0 | 212 | 29,75 ± 0,30 | 26,75 - 0,30 | 30 | 1 998,053 | 1 997,4 | 0,3 | 12,40 | 146-030-020 |
| 4,0 | 20 | 39,70 ± 0,10 | 35,70 - 0,10 | 40 | 251,327 | 250,8 | 0,3 | 2,80 | 146-040-002 |
| 4,0 | 40 | 39,70 ± 0,10 | 35,70 - 0,10 | 40 | 502,655 | 501,9 | 0,3 | 5,50 | 146-040-005 |
| 4,0 | 80 | 39,70 ± 0,20 | 35,70 - 0,20 | 40 | 1 005,313 | 1 004,6 | 0,3 | 11,00 | 146-040-010 |
| 4,0 | 159 | 39,70 ± 0,30 | 35,70 - 0,30 | 40 | 1 998,053 | 1 997,3 | 0,3 | 22,00 | 146-040-020 |
| 5,0 | 32 | 49,70 ± 0,10 | 44,70 - 0,10 | 50 | 502,655 | 501,8 | 0,4 | 8,60 | 146-050-005 |
| 5,0 | 64 | 49,70 ± 0,20 | 44,70 - 0,20 | 50 | 1 005,310 | 1 004,5 | 0,4 | 17,20 | 146-050-010 |
| 5,0 | 128 | 49,70 ± 0,30 | 44,70 - 0,30 | 50 | 2 010,619 | 2 009,8 | 0,4 | 34,40 | 146-050-020 |
| 6,0 | 27 | 59,65 ± 0,10 | 53,65 - 0,10 | 60 | 508,938 | 508,0 | 0,4 | 12,30 | 146-060-005 |
| 6,0 | 53 | 59,65 ± 0,20 | 53,65 - 0,20 | 60 | 999,026 | 998,1 | 0,4 | 24,50 | 146-060-010 |
| 6,0 | 106 | 59,65 ± 0,30 | 53,65 - 0,30 | 60 | 1 998,053 | 1 997,2 | 0,4 | 49,00 | 146-060-020 |
| 8,0 | 20 | 79,60 ± 0,30 | 71,60 - 0,30 | 80 | 502,655 | 501,4 | 0,5 | 21,40 | 146-080-005 |
| 8,0 | 40 | 79,60 ± 0,40 | 71,60 - 0,40 | 80 | 1 005,310 | 1 004,0 | 0,5 | 42,70 | 146-080-010 |
| 8,0 | 80 | 79,60 ± 0,50 | 71,60 - 0,50 | 80 | 2 010,619 | 2 009,4 | 0,5 | 85,40 | 146-080-020 |

z*... Zähnezahl / *number of teeth*

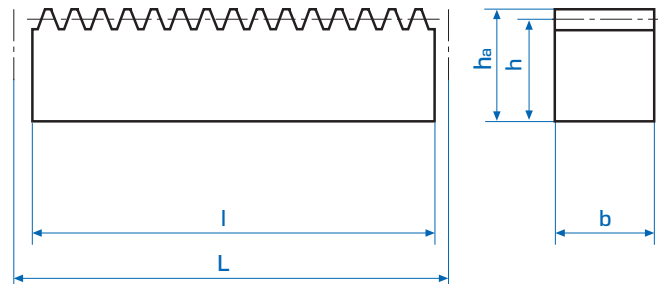
Montagestücke siehe Seite B 15/16 / *Mounting pieces page B 15/16*

Zahnstangen für fortl. Montage

Racks for continuous mounting

Steel: 1.0503 [C 45]
straight teeth,
pressure angle 20°

Stahl: 1.0503 [C 45]
 geradzahnt,
 Eingriffswinkel 20°



| Modul Module | Teilung pitch | z* | h _a | h | b _{h11} | theor. L | l | ± | [kg] | Bestell Nr. Part No. |
|-----------------|------------------|-----|----------------|--------------|------------------|-------------|---------|-----|-------|-------------------------|
| 1,591 | 5 | 50 | 14,80 ± 0,10 | 13,21 - 0,10 | 15 | 250,000 | 249,6 | 0,3 | 0,39 | 146-016-002 |
| 1,591 | 5 | 100 | 14,80 ± 0,10 | 13,21 - 0,10 | 15 | 500,000 | 499,6 | 0,3 | 0,78 | 146-016-005 |
| 1,591 | 5 | 200 | 14,80 ± 0,15 | 13,21 - 0,15 | 15 | 1 000,000 | 999,6 | 0,3 | 1,55 | 146-016-010 |
| 1,591 | 5 | 400 | 14,80 ± 0,15 | 13,21 - 0,15 | 15 | 2 000,000 | 1 999,6 | 0,3 | 3,10 | 146-016-020 |
| 3,183 | 10 | 25 | 29,70 ± 0,10 | 26,52 - 0,10 | 30 | 250,000 | 249,4 | 0,3 | 1,55 | 146-031-002 |
| 3,183 | 10 | 50 | 29,70 ± 0,15 | 26,52 - 0,15 | 30 | 500,000 | 499,4 | 0,3 | 3,10 | 146-031-005 |
| 3,183 | 10 | 100 | 29,70 ± 0,20 | 26,52 - 0,20 | 30 | 1 000,000 | 999,4 | 0,3 | 6,20 | 146-031-010 |
| 3,183 | 10 | 200 | 29,70 ± 0,30 | 26,52 - 0,30 | 30 | 2 000,000 | 1 999,4 | 0,3 | 12,40 | 146-031-020 |

WMH-Standard racks made out of material Steel 1.0503 [C 45] are manufactured according to DIN 178 in tooth quality 9 according to DIN 3962, 3963 and 3967.

WMH-Standard-Zahnstangen werden mit Überkopfschneider aus Vierkantblankstahl 1.0503 [C 45] nach DIN 178 in Verzahnungsqualität 9 nach DIN 3962, 3963 und 3967 hergestellt.

Sollten Sie andere Abmessungen benötigen, helfen Ihnen unsere Konstrukteure gerne weiter.

If you need other dimensions - please contact our engineering department.

z*... Zähnezahl / *number of teeth*

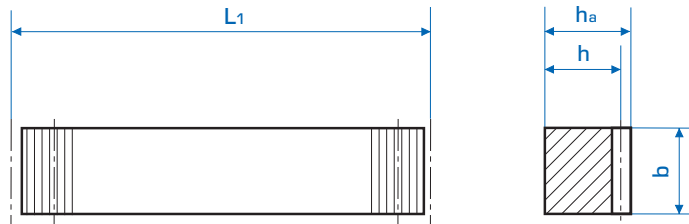
Montagestücke siehe Seite B 15/16 / *Mounting pieces page B 15/16*

Zahnstangen für fortl. Montage rostfrei

Racks for continuous mounting stainless steel

Steel: 1.4305
[X8 CrNiS18-9]
straight teeth,
pressure angle 20°
toothing quality 8e27

Stahl: 1.4305
[X8 CrNiS 18-9]
 geradverzahnt,
 Eingriffswinkel 20°
 Verz. Qual. 8e27



| Modul Module | L_1 | z^* | b | h_a | h | [kg] | Bestell Nr. Part No. |
|-----------------|-----------|-------|----|------------------|--------------|-------|-------------------------|
| 1,0 | 499,513 | 159 | 10 | $9,8 \pm 0,10$ | 8,8 - 0,10 | 0,34 | 146-010-605 |
| 1,0 | 999,026 | 318 | 10 | $9,8 \pm 0,15$ | 8,8 - 0,15 | 0,68 | 146-010-610 |
| 1,5 | 499,513 | 106 | 15 | $14,8 \pm 0,10$ | 13,3 - 0,10 | 0,78 | 146-015-605 |
| 1,5 | 999,026 | 212 | 15 | $14,8 \pm 0,15$ | 13,3 - 0,15 | 1,55 | 146-015-610 |
| 2,0 | 502,655 | 80 | 20 | $19,75 \pm 0,10$ | 17,75 - 0,10 | 1,40 | 146-020-605 |
| 2,0 | 999,026 | 159 | 20 | $19,75 \pm 0,15$ | 17,75 - 0,15 | 2,80 | 146-020-610 |
| 2,0 | 1 998,053 | 318 | 20 | $19,75 \pm 0,25$ | 17,75 - 0,25 | 5,60 | 146-020-620 |
| 3,0 | 499,513 | 53 | 30 | $29,75 \pm 0,15$ | 26,75 - 0,15 | 3,10 | 146-030-605 |
| 3,0 | 999,026 | 106 | 30 | $29,75 \pm 0,20$ | 26,75 - 0,20 | 6,20 | 146-030-610 |
| 3,0 | 1 998,053 | 212 | 30 | $29,75 \pm 0,30$ | 26,75 - 0,30 | 12,40 | 146-030-620 |
| 4,0 | 1 005,313 | 80 | 40 | $39,70 \pm 0,20$ | 35,70 - 0,20 | 11,00 | 146-040-610 |
| 4,0 | 1 998,053 | 159 | 40 | $39,70 \pm 0,30$ | 35,70 - 0,30 | 22,00 | 146-040-620 |

z^* ... Zähnezahl / *number of teeth*

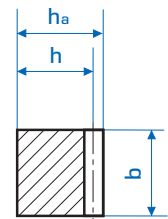
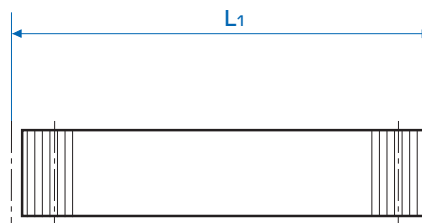
Montagestücke siehe Seite B 15/16 / *Mounting pieces page B 15/16*

Zahnstangen für fortl. Montage rostfrei

Racks for continuous mounting stainless steel

Steel: 1.4305
[x12 CrNiS188]
 straight teeth,
 pressure angle 20°
 toothing quality 8e27

Stahl: 1.4305
 [x12 CrNiS 188]
 geradverzahnt,
 Eingriffswinkel 20°
 Verz. Qual. 8e27



| Modul Module | L_1 | z^* | b | h_a | h | [kg] | Bestell Nr. Part No. |
|-----------------|-------|-------|----|-------------|-------------|-------|-------------------------|
| 1,591 p = 5 mm | 250 | 50 | 15 | 14,8 ± 0,10 | 13,2 - 0,10 | 0,39 | 146-016-602 |
| 1,591 p = 5 mm | 500 | 100 | 15 | 14,8 ± 0,10 | 13,2 - 0,10 | 0,78 | 146-016-605 |
| 1,591 p = 5 mm | 1 000 | 200 | 15 | 14,8 ± 0,15 | 13,2 - 0,15 | 1,55 | 146-016-610 |
| 3,183 p = 10 mm | 250 | 25 | 30 | 29,7 ± 0,10 | 26,5 - 0,10 | 1,55 | 146-031-602 |
| 3,183 p = 10 mm | 500 | 50 | 30 | 29,7 ± 0,15 | 26,5 - 0,15 | 3,10 | 146-031-605 |
| 3,183 p = 10 mm | 1 000 | 100 | 30 | 29,7 ± 0,20 | 26,5 - 0,20 | 6,20 | 146-031-610 |
| 3,183 p = 10 mm | 2 000 | 200 | 30 | 29,7 ± 0,30 | 26,5 - 0,30 | 12,40 | 146-031-620 |

z^* ... Zähnezahl / **number of teeth**

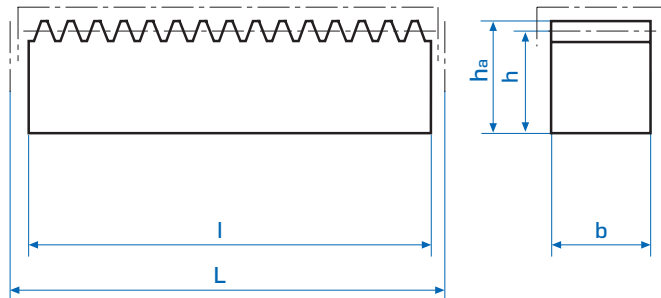
Montagestücke siehe Seite B 15/16 / **Mounting pieces page B 15/16**

Zahnstangen für fortl. Montage induktiv gehärtet

Racks for continuous mounting induction hardened

Steel: 1.0503 [C 45]
 straight teeth,
 pressure angle 20°

Stahl: 1.0503 [C 45]
 geradverzahnt,
 Eingriffswinkel 20°



| Modul Module | z* | h _a | h | b _{h11} | theor. L | l | ± | [kg] | Bestell Nr. Part No. |
|-----------------|-----|----------------|--------------|------------------|-------------|---------|-----|-------|-------------------------|
| 1,0 | 80 | 9,8 ± 0,10 | 8,8 - 0,10 | 10 | 251,327 | 250,8 | 0,5 | 0,17 | 146-010-402 |
| 1,0 | 159 | 9,8 ± 0,10 | 8,8 - 0,10 | 10 | 499,513 | 499,0 | 0,5 | 0,34 | 146-010-405 |
| 1,0 | 318 | 9,8 ± 0,15 | 8,8 - 0,15 | 10 | 999,026 | 998,5 | 0,5 | 0,68 | 146-010-410 |
| 1,5 | 53 | 14,8 ± 0,10 | 13,3 - 0,10 | 15 | 249,757 | 249,3 | 0,5 | 0,39 | 146-015-402 |
| 1,5 | 106 | 14,8 ± 0,10 | 13,3 - 0,10 | 15 | 499,513 | 499,1 | 0,5 | 0,78 | 146-015-405 |
| 1,5 | 212 | 14,8 ± 0,15 | 13,3 - 0,15 | 15 | 999,026 | 998,6 | 0,5 | 1,55 | 146-015-410 |
| 1,5 | 424 | 14,8 ± 0,15 | 13,3 - 0,15 | 15 | 1 998,053 | 1 997,6 | 0,5 | 3,10 | 146-015-420 |
| 2,0 | 40 | 19,75 ± 0,10 | 17,75 - 0,10 | 20 | 251,327 | 250,8 | 0,5 | 0,70 | 146-020-402 |
| 2,0 | 80 | 19,75 ± 0,10 | 17,75 - 0,10 | 20 | 502,655 | 502,1 | 0,5 | 1,40 | 146-020-405 |
| 2,0 | 159 | 19,75 ± 0,15 | 17,75 - 0,15 | 20 | 999,026 | 998,5 | 0,5 | 2,80 | 146-020-410 |
| 2,0 | 318 | 19,75 ± 0,25 | 17,75 - 0,25 | 20 | 1 998,053 | 1 997,5 | 0,5 | 5,60 | 146-020-420 |
| 2,5 | 32 | 24,75 ± 0,10 | 22,25 - 0,10 | 25 | 251,327 | 250,8 | 0,5 | 1,10 | 146-025-402 |
| 2,5 | 64 | 24,75 ± 0,10 | 22,25 - 0,10 | 25 | 502,655 | 502,1 | 0,5 | 2,10 | 146-025-405 |
| 2,5 | 127 | 24,75 ± 0,15 | 22,25 - 0,15 | 25 | 997,456 | 996,9 | 0,5 | 4,20 | 146-025-410 |
| 2,5 | 255 | 24,75 ± 0,25 | 22,25 - 0,25 | 25 | 2 002,765 | 2 002,3 | 0,5 | 8,40 | 146-025-420 |
| 3,0 | 27 | 29,75 ± 0,10 | 26,75 - 0,10 | 30 | 254,469 | 253,8 | 0,5 | 1,60 | 146-030-402 |
| 3,0 | 53 | 29,75 ± 0,10 | 26,75 - 0,10 | 30 | 499,513 | 498,9 | 0,5 | 3,10 | 146-030-405 |
| 3,0 | 106 | 29,75 ± 0,20 | 26,75 - 0,20 | 30 | 999,026 | 998,4 | 0,5 | 6,20 | 146-030-410 |
| 3,0 | 212 | 29,75 ± 0,30 | 26,75 - 0,30 | 30 | 1 998,053 | 1 997,4 | 0,5 | 12,40 | 146-030-420 |
| 4,0 | 20 | 39,70 ± 0,10 | 35,70 - 0,10 | 40 | 251,327 | 250,8 | 0,5 | 2,80 | 146-040-402 |
| 4,0 | 40 | 39,70 ± 0,10 | 35,70 - 0,10 | 40 | 502,655 | 501,9 | 0,5 | 5,50 | 146-040-405 |
| 4,0 | 80 | 39,70 ± 0,20 | 35,70 - 0,20 | 40 | 1 005,313 | 1 004,6 | 0,5 | 11,00 | 146-040-410 |
| 4,0 | 159 | 39,70 ± 0,30 | 35,70 - 0,30 | 40 | 1 998,053 | 1 997,3 | 0,5 | 22,00 | 146-040-420 |
| 5,0 | 32 | 49,70 ± 0,10 | 44,70 - 0,10 | 50 | 502,655 | 501,8 | 0,6 | 8,60 | 146-050-405 |
| 5,0 | 64 | 49,70 ± 0,20 | 44,70 - 0,20 | 50 | 1 005,310 | 1 004,5 | 0,6 | 17,20 | 146-050-410 |
| 5,0 | 128 | 49,70 ± 0,30 | 44,70 - 0,30 | 50 | 2 010,619 | 2 009,8 | 0,6 | 34,40 | 146-050-420 |
| 6,0 | 27 | 59,65 ± 0,10 | 53,65 - 0,10 | 60 | 508,938 | 508,0 | 0,6 | 12,30 | 146-060-405 |
| 6,0 | 53 | 59,65 ± 0,20 | 53,65 - 0,20 | 60 | 999,026 | 998,1 | 0,6 | 24,50 | 146-060-410 |
| 6,0 | 106 | 59,65 ± 0,30 | 53,65 - 0,30 | 60 | 1 998,053 | 1 997,2 | 0,6 | 49,00 | 146-060-420 |
| 8,0 | 20 | 79,60 ± 0,30 | 71,60 - 0,30 | 80 | 502,655 | 501,4 | 0,7 | 21,40 | 146-080-405 |
| 8,0 | 40 | 79,60 ± 0,40 | 71,60 - 0,40 | 80 | 1 005,310 | 1 004,0 | 0,7 | 42,70 | 146-080-410 |
| 8,0 | 80 | 79,60 ± 0,50 | 71,60 - 0,50 | 80 | 2 010,619 | 2 009,4 | 0,7 | 85,40 | 146-080-420 |

Dimension „l“ before induction hardening. Länge „l“ vor dem Induktiv härten.
When racks are hardened they can distort slightly. Ein Härteverzug ist nicht beeinflussbar.

z*... Zähnezahl / **number of teeth**

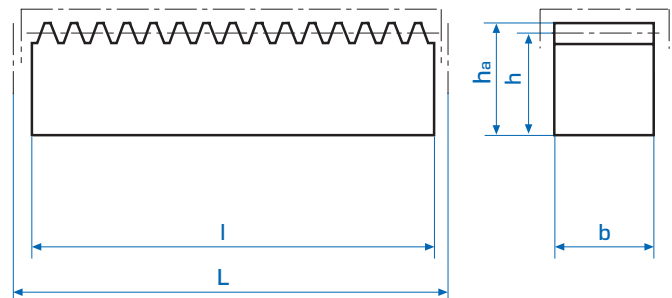
Montagestücke siehe Seite B 15/16 / **Mounting pieces page B 15/16**

Zahnstangen für fortl. Montage induktiv gehärtet

Racks for continuous mounting induction hardened

Steel: 1.0503 [C 45]
*straight teeth,
 pressure angle 20°
 induction hardened*

Stahl: 1.0503 [C 45]
 geradverzahnt,
 Eingriffswinkel 20°
 induktiv gehärtet



| Modul Module | z^* | h_a | h | b_{h11} | theor. L | l | \pm | [kg] | Bestell Nr. Part No. |
|-----------------|-------|--------------|--------------|-----------|-------------|---------|-------|-------|-------------------------|
| 1,591 p = 5 mm | 50 | 14,80 ± 0,10 | 13,21 - 0,10 | 15 | 250,000 | 249,6 | 0,5 | 0,39 | 146-016-402 |
| 1,591 p = 5 mm | 100 | 14,80 ± 0,10 | 13,21 - 0,10 | 15 | 500,000 | 499,6 | 0,5 | 0,78 | 146-016-405 |
| 1,591 p = 5 mm | 200 | 14,80 ± 0,15 | 13,21 - 0,15 | 15 | 1 000,000 | 999,6 | 0,5 | 1,55 | 146-016-410 |
| 1,591 p = 5 mm | 400 | 14,80 ± 0,15 | 13,21 - 0,15 | 15 | 2 000,000 | 1 999,6 | 0,5 | 3,10 | 146-016-420 |
| 3,183 p = 10 mm | 50 | 29,70 ± 0,15 | 26,52 - 0,15 | 30 | 500,000 | 499,4 | 0,5 | 3,10 | 146-031-405 |
| 3,183 p = 10 mm | 100 | 29,70 ± 0,20 | 26,52 - 0,20 | 30 | 1 000,000 | 999,4 | 0,5 | 6,20 | 146-031-410 |
| 3,183 p = 10 mm | 200 | 29,70 ± 0,30 | 26,52 - 0,30 | 30 | 2 000,000 | 1 999,4 | 0,5 | 12,40 | 146-031-420 |

***Dimension „l“ before induction hardening.
 When racks are hardened they can distort slightly.***

Länge „l“ vor dem Induktiv härten.
 Ein Härteverzug ist nicht beeinflussbar.

Sollten Sie andere Abmessungen benötigen, helfen Ihnen unsere Konstrukteure gerne weiter.

If you need other dimensions - please contact our engineering department.

z^* ... Zähnezahl / **number of teeth**

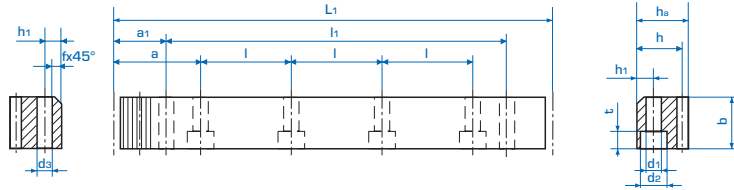
Montagestücke siehe Seite B 15/16 / **Mounting pieces page B 15/16**

Zahnstangen für fortl. Montage vergütet, geradverzahnt

Racks for continuous mounting coated, straight teeth

Steel: 1.7225
[42CrMo4V]
straight teeth,
pressure angle 20°
toothing quality 8e27

Stahl: 1.7225
 [42CrMo4V]
 geradverzahnt,
 Eingriffswinkel 20°
 Verzahnung gefräst
 Verz. Qual. 8e27



mit Bohrungen

with bores

| Modul | Module | L_1 | z^* | b | h_a | h | a | l | h_1 | d_1 | d_2 | t | a_1 | l_1 | d_3 | [kg] | Bestell Nr. Part No. |
|-------|---------|-------|-------|-----|-------|------|--------|-----|-------|-------|-------|------|-------|-------|-------|-------------|-------------------------|
| 2,0 | 502,7 | 80 | 25 | 24 | 22,0 | 62,8 | 125,66 | 8 | 7 | 11 | 7 | 31,3 | 440,1 | 5,7 | 2,10 | 146-020-205 | |
| 2,0 | 1 005,3 | 160 | 25 | 24 | 22,0 | 62,8 | 125,66 | 8 | 7 | 11 | 7 | 31,3 | 942,7 | 5,7 | 4,20 | 146-020-210 | |
| 3,0 | 508,9 | 54 | 30 | 29 | 26,0 | 63,6 | 127,23 | 9 | 10 | 15 | 9 | 34,4 | 440,1 | 7,7 | 3,00 | 146-030-205 | |
| 3,0 | 1 017,9 | 108 | 30 | 29 | 26,0 | 63,6 | 127,23 | 9 | 10 | 15 | 9 | 34,4 | 949,1 | 7,7 | 6,00 | 146-030-210 | |
| 4,0 | 502,7 | 40 | 39 | 39 | 35,0 | 62,8 | 125,66 | 12 | 10 | 15 | 9 | 37,5 | 427,7 | 7,7 | 5,30 | 146-040-205 | |
| 4,0 | 1 005,3 | 80 | 39 | 39 | 35,0 | 62,8 | 125,66 | 12 | 10 | 15 | 9 | 37,5 | 930,3 | 7,7 | 10,50 | 146-040-210 | |

ohne Bohrungen

without bores

| Modul | Module | L_1 | z^* | b | h_a | h | [kg] | Bestell Nr. Part No. |
|-------|---------|-------|-------|-----|-------|-------|-------------|-------------------------|
| 2,0 | 502,7 | 80 | 25 | 24 | 22,0 | 2,10 | 146-020-105 | |
| 2,0 | 1 005,3 | 160 | 25 | 24 | 22,0 | 4,20 | 146-020-110 | |
| 3,0 | 508,9 | 54 | 30 | 29 | 26,0 | 3,00 | 146-030-105 | |
| 3,0 | 1 017,9 | 108 | 30 | 29 | 26,0 | 6,00 | 146-030-110 | |
| 4,0 | 502,7 | 40 | 40 | 39 | 35,0 | 5,30 | 146-040-105 | |
| 4,0 | 1 005,3 | 80 | 40 | 39 | 35,0 | 10,50 | 146-040-110 | |

z^* ... Zähnezahl / *number of teeth*

Montagestücke siehe Seite B 15/16 / *Mounting pieces page B 15/16*

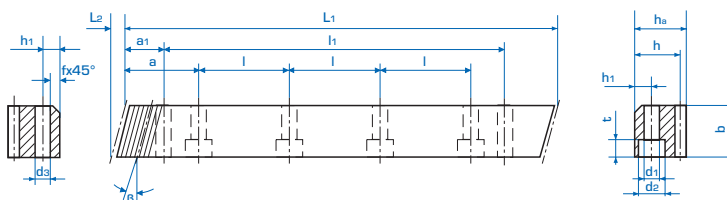
Zahnstangen für fortl. Montage vergütet, schrägverzahnt

Racks for continuous mounting coated, helical

Steel: 1.7225
[42CrMo4V]
 helix angle

19° 31' 42" right hand
 tooting quality 8e27

Stahl: 1.7225
 [42CrMo4V]
 Schrägungswinkel
 19° 31' 42" rechts
 Verz. Qual. 8e27



mit Bohrungen

with bores

| Modul | | | | | | | | | | | | | | | | Bestell Nr. | |
|--------|----------------|----------------|-----|----|----------------|------|------|-----|----------------|----------------|----------------|---|----------------|----------------|----------------|-------------|-------------|
| Module | L ₁ | L ₂ | z* | b | h _a | h | a | l | h ₁ | d ₁ | d ₂ | t | a ₁ | l ₁ | d ₃ | [kg] | Part No. |
| 2,0 | 500,0 | 8,8 | 75 | 25 | 24 | 22,0 | 62,5 | 125 | 8 | 7 | 11 | 7 | 31,7 | 436,6 | 5,7 | 2,10 | 143-020-505 |
| 2,0 | 1 000,0 | 8,8 | 150 | 25 | 24 | 22,0 | 62,5 | 125 | 8 | 7 | 11 | 7 | 31,7 | 936,6 | 5,7 | 4,20 | 143-020-510 |
| 3,0 | 500,0 | 10,6 | 50 | 30 | 29 | 26,0 | 62,5 | 125 | 9 | 10 | 15 | 9 | 35 | 430,0 | 7,7 | 3,00 | 143-030-505 |
| 3,0 | 1 000,0 | 10,6 | 100 | 30 | 29 | 26,0 | 62,5 | 125 | 9 | 10 | 15 | 9 | 35 | 930,6 | 7,7 | 6,00 | 143-030-510 |
| 4,0 | 506,7 | 14,2 | 38 | 40 | 39 | 35,0 | 62,5 | 125 | 12 | 10 | 15 | 9 | 33,3 | 433,0 | 7,7 | 5,30 | 143-040-505 |
| 4,0 | 1 000,0 | 14,2 | 75 | 40 | 39 | 35,0 | 62,5 | 125 | 12 | 10 | 15 | 9 | 33,3 | 933,4 | 7,7 | 10,50 | 143-040-510 |

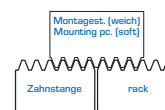
ohne Bohrungen

without bores

| Modul | | | | | | | | | | | | Bestell Nr. | | | | | |
|--------|----------------|----------------|-----|----|----------------|------|--|--|--|--|--|-------------|--|--|--|-------|-------------|
| Module | L ₁ | L ₂ | z* | b | h _a | h | | | | | | | | | | [kg] | Part No. |
| 2,0 | 500,0 | 8,8 | 75 | 25 | 24 | 22,0 | | | | | | | | | | 2,10 | 143-020-705 |
| 2,0 | 1 000,0 | 8,8 | 150 | 25 | 24 | 22,0 | | | | | | | | | | 4,20 | 143-020-710 |
| 3,0 | 500,0 | 10,6 | 50 | 30 | 29 | 26,0 | | | | | | | | | | 3,00 | 143-030-705 |
| 3,0 | 1 000,0 | 10,6 | 100 | 30 | 29 | 26,0 | | | | | | | | | | 6,00 | 143-030-710 |
| 4,0 | 506,7 | 14,2 | 38 | 40 | 39 | 35,0 | | | | | | | | | | 5,30 | 143-040-705 |
| 4,0 | 1 000,0 | 14,2 | 75 | 40 | 39 | 35,0 | | | | | | | | | | 10,50 | 143-040-710 |

z*... Zähnezahl / *number of teeth*

Montagestücke siehe Seite B 15/16 / *Mounting pieces page B 15/16*

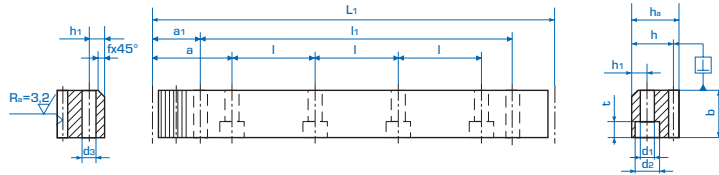


Zahnstangen für fortl. Montage induktiv gehärtet, geradverzahnt

Racks for continuous mounting induction hardened, straight teeth

Steel: 1.0503
[C 45 K]
50-55 HRC
straight teeth,
pressure angle 20°
toothing quality
10e27

Stahl: 1.0503
[C 45 K]
50-55 HRC
geradverzahnt,
 Eingriffswinkel 20°
 Verz. Qual. 10e27



mit Bohrungen

with bores

| Modul | Module | L_1 | z^* | b | h_a | h | a | l | h_1 | d_1 | d_2 | $f^{+0,5}$ | t | a_1 | l_1 | d_3 | [kg] | Bestell Nr. | Part No. |
|-------|---------|-------|-------|-----|-------|------|------|--------|-------|-------|-------|------------|-----|-------|-------|-------|-------|-------------|----------|
| 2,0 | 502,7 | 80 | 24 | 24 | 24 | 22,0 | 62,8 | 125,66 | 8 | 7 | 11 | 2 | 7 | 31,3 | 440,1 | 5,7 | 2,10 | 144-020-805 | |
| 2,0 | 1 005,3 | 160 | 24 | 24 | 24 | 22,0 | 62,8 | 125,66 | 8 | 7 | 11 | 2 | 7 | 31,3 | 942,7 | 5,7 | 4,20 | 144-020-810 | |
| 3,0 | 508,9 | 54 | 29 | 29 | 29 | 26,0 | 63,6 | 127,23 | 9 | 10 | 15 | 2 | 9 | 34,4 | 440,1 | 7,7 | 3,00 | 144-030-805 | |
| 3,0 | 1 017,9 | 108 | 29 | 29 | 29 | 26,0 | 63,6 | 127,23 | 9 | 10 | 15 | 2 | 9 | 34,4 | 949,1 | 7,7 | 6,00 | 144-030-810 | |
| 4,0 | 502,7 | 40 | 40 | 39 | 39 | 35,0 | 62,8 | 125,66 | 12 | 10 | 15 | 3 | 9 | 37,5 | 427,7 | 7,7 | 5,30 | 144-040-805 | |
| 4,0 | 1 005,3 | 80 | 40 | 39 | 39 | 35,0 | 62,8 | 125,66 | 12 | 10 | 15 | 3 | 9 | 37,5 | 930,3 | 7,7 | 10,50 | 144-040-810 | |

ohne Bohrungen

without bores

| Modul | Module | L_1 | z^* | b | h_a | h | $f^{+0,5}$ | [kg] | Bestell Nr. | Part No. |
|-------|---------|-------|-------|-----|-------|------|------------|-------|-------------|----------|
| 2,0 | 502,7 | 80 | 24 | 24 | 24 | 22,0 | 2 | 2,10 | 144-020-905 | |
| 2,0 | 1 005,3 | 160 | 24 | 24 | 24 | 22,0 | 2 | 4,20 | 144-020-910 | |
| 3,0 | 508,9 | 54 | 29 | 29 | 29 | 26,0 | 2 | 3,00 | 144-030-905 | |
| 3,0 | 1 017,9 | 108 | 29 | 29 | 29 | 26,0 | 2 | 6,00 | 144-030-910 | |
| 4,0 | 502,7 | 40 | 39 | 39 | 39 | 35,0 | 3 | 5,30 | 144-040-905 | |
| 4,0 | 1 005,3 | 80 | 39 | 39 | 39 | 35,0 | 3 | 10,50 | 144-040-910 | |

Sollten Sie andere Abmessungen benötigen, helfen Ihnen unsere Konstrukteure gerne weiter.

If you need other dimensions - please contact our engineering department.

z^* ... Zähnezahl / **number of teeth**

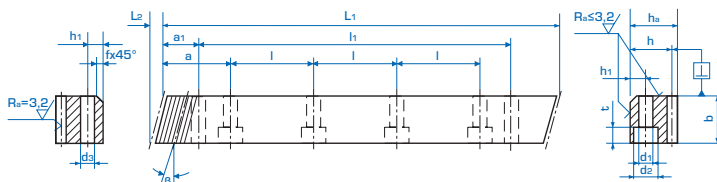
Montagestücke siehe Seite B 15/16 / **Mounting pieces page B 15/16**

Zahnstangen für fortl. Montage induktiv gehärtet, schrägverzahnt

Racks for continuous mounting induction hardened, helical

Steel: 1.0503
[C 45K]
50-55 HRC
helix angle
19° 31' 42" right hand
toothing quality
10e27

Stahl: 1.0503
[C 45K]
50-55 HRC
Schrägungswinkel
19° 31' 42" rechts
Verz. Qual. 10e27



mit Bohrungen

with bores

| Modul | | | | | | | | | | | | | | | | Bestell Nr. | | |
|--------|----------------|----------------|-----|----|----------------|------|------|-----|----------------|----------------|----------------|-------------------|---|----------------|----------------|----------------|-------|-------------|
| Module | L ₁ | L ₂ | z* | b | h _a | h | a | l | h ₁ | d ₁ | d ₂ | f ^{+0,5} | t | a ₁ | l ₁ | d ₃ | [kg] | Part No. |
| 2,0 | 500,0 | 8,5 | 75 | 24 | 24 | 22,0 | 62,5 | 125 | 8 | 7 | 11 | 2 | 7 | 31,7 | 436,6 | 5,7 | 2,10 | 143-020-805 |
| 2,0 | 1 000,0 | 8,5 | 150 | 24 | 24 | 22,0 | 62,5 | 125 | 8 | 7 | 11 | 2 | 7 | 31,7 | 936,6 | 5,7 | 4,20 | 143-020-810 |
| 3,0 | 500,0 | 10,3 | 50 | 29 | 29 | 26,0 | 62,5 | 125 | 9 | 10 | 15 | 2 | 9 | 35,0 | 430,0 | 7,7 | 3,00 | 143-030-805 |
| 3,0 | 1 000,0 | 10,3 | 100 | 29 | 29 | 26,0 | 62,5 | 125 | 9 | 10 | 15 | 2 | 9 | 35,0 | 930,6 | 7,7 | 6,00 | 143-030-810 |
| 4,0 | 500,0 | 13,8 | 38 | 39 | 39 | 35,0 | 62,5 | 125 | 12 | 10 | 15 | 3 | 9 | 33,3 | 433,0 | 7,7 | 5,30 | 143-040-805 |
| 4,0 | 1 000,0 | 13,8 | 75 | 39 | 39 | 35,0 | 62,5 | 125 | 12 | 10 | 15 | 3 | 9 | 33,3 | 933,4 | 7,7 | 10,50 | 143-040-810 |

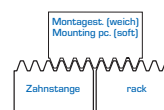
ohne Bohrungen

without bores

| Modul | | | | | | | | | | | | | | | | Bestell Nr. | | |
|--------|----------------|----------------|-----|----|----------------|------|---|---|----------------|----------------|----------------|-------------------|---|----------------|----------------|----------------|-------|-------------|
| Module | L ₁ | L ₂ | z* | b | h _a | h | a | l | h ₁ | d ₁ | d ₂ | f ^{+0,5} | t | a ₁ | l ₁ | d ₃ | [kg] | Part No. |
| 2,0 | 500,0 | 8,5 | 75 | 24 | 24 | 22,0 | - | - | - | - | - | 2 | - | - | - | - | 2,10 | 143-020-905 |
| 2,0 | 1 000,0 | 8,5 | 150 | 24 | 24 | 22,0 | - | - | - | - | - | 2 | - | - | - | - | 4,20 | 143-020-910 |
| 3,0 | 500,0 | 10,3 | 50 | 29 | 29 | 26,0 | - | - | - | - | - | 2 | - | - | - | - | 3,00 | 143-030-905 |
| 3,0 | 1 000,0 | 10,3 | 100 | 29 | 29 | 26,0 | - | - | - | - | - | 2 | - | - | - | - | 6,00 | 143-030-910 |
| 4,0 | 500,0 | 13,8 | 38 | 39 | 39 | 35,0 | - | - | - | - | - | 3 | - | - | - | - | 5,30 | 143-040-905 |
| 4,0 | 1 000,0 | 13,8 | 75 | 39 | 39 | 35,0 | - | - | - | - | - | 3 | - | - | - | - | 10,50 | 143-040-910 |

z*... Zähnezahl / *number of teeth*

Montagestücke siehe Seite B 15/16 / *Mounting pieces page B 15/16*

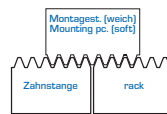
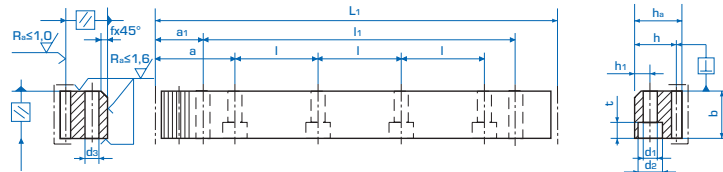


Zahnstangen für fortl. Montage mit geschl. Zahnflanken, geradverzahnt

Racks for continuous mounting with ground teeth, straight teeth

Steel: 1.7131
[16MnCr5]
 straight teeth,
 pressure angle 20°
 tooth quality 6h25
 case hardened
 60 HRC

Stahl: 1.7131
[16MnCr5]
 geradverzahnt,
 Eingriffswinkel 20°
 Verz. Qual. 6h25
 einsatzgehärtet
 60 HRC



Montagestück

mit Bohrungen

with bores

| Modul | Module | L_1 | z^* | b | h_a | h | a | l | h_1 | d_1 | d_2 | $f^{+0,5}$ | t | a_1 | l_1 | d_3 | [kg] | Bestell Nr. Part No. |
|-------|---------|-------|-------|-----|-------|------|--------|-----|-------|-------|-------|------------|------|-------|-------|-------|-------------|-------------------------|
| 2,0 | 251,3 | 40 | 24 | 24 | 22,0 | 62,8 | 125,66 | 8 | 7 | 11 | 2 | 7 | 31,3 | 188,7 | 5,7 | 1,00 | 144-020-202 | |
| 2,0 | 502,7 | 80 | 24 | 24 | 22,0 | 62,8 | 125,66 | 8 | 7 | 11 | 2 | 7 | 31,3 | 440,1 | 5,7 | 2,10 | 144-020-205 | |
| 2,0 | 1 005,3 | 160 | 24 | 24 | 22,0 | 62,8 | 125,66 | 8 | 7 | 11 | 2 | 7 | 31,3 | 942,7 | 5,7 | 4,20 | 144-020-210 | |
| 3,0 | 254,5 | 27 | 29 | 29 | 26,0 | 63,6 | 127,23 | 9 | 10 | 15 | 2 | 9 | 34,4 | 185,7 | 7,7 | 1,50 | 144-030-202 | |
| 3,0 | 508,9 | 54 | 29 | 29 | 26,0 | 63,6 | 127,23 | 9 | 10 | 15 | 2 | 9 | 34,4 | 440,1 | 7,7 | 3,00 | 144-030-205 | |
| 3,0 | 1 017,9 | 108 | 29 | 29 | 26,0 | 63,6 | 127,23 | 9 | 10 | 15 | 2 | 9 | 34,4 | 949,1 | 7,7 | 6,00 | 144-030-210 | |
| 4,0 | 251,3 | 20 | 39 | 39 | 35,0 | 62,8 | 125,66 | 12 | 10 | 15 | 3 | 9 | 37,5 | 176,3 | 7,7 | 2,60 | 144-040-202 | |
| 4,0 | 502,7 | 40 | 39 | 39 | 35,0 | 62,8 | 125,66 | 12 | 10 | 15 | 3 | 9 | 37,5 | 427,7 | 7,7 | 5,30 | 144-040-205 | |
| 4,0 | 1 005,3 | 80 | 39 | 39 | 35,0 | 62,8 | 125,66 | 12 | 10 | 15 | 3 | 9 | 37,5 | 930,3 | 7,7 | 10,50 | 144-040-210 | |

ohne Bohrungen

without bores

| Modul | Module | L_1 | z^* | b | h_a | h | $f^{+0,5}$ | [kg] | Bestell Nr. Part No. |
|-------|---------|-------|-------|-----|-------|-----|------------|-------------|-------------------------|
| 2,0 | 251,3 | 40 | 24 | 24 | 22,0 | 2 | 1,00 | 144-020-102 | |
| 2,0 | 502,7 | 80 | 24 | 24 | 22,0 | 2 | 2,10 | 144-020-105 | |
| 2,0 | 1 005,3 | 160 | 24 | 24 | 22,0 | 2 | 4,20 | 144-020-110 | |
| 3,0 | 254,5 | 27 | 29 | 29 | 26,0 | 2 | 1,50 | 144-030-102 | |
| 3,0 | 508,9 | 54 | 29 | 29 | 26,0 | 2 | 3,00 | 144-030-105 | |
| 3,0 | 1 017,9 | 108 | 29 | 29 | 26,0 | 2 | 6,00 | 144-030-110 | |
| 4,0 | 251,3 | 20 | 39 | 39 | 35,0 | 3 | 2,60 | 144-040-102 | |
| 4,0 | 502,7 | 40 | 39 | 39 | 35,0 | 3 | 5,30 | 144-040-105 | |
| 4,0 | 1 005,3 | 80 | 39 | 39 | 35,0 | 3 | 10,50 | 144-040-110 | |

z^* ... Zähnezahl / number of teeth

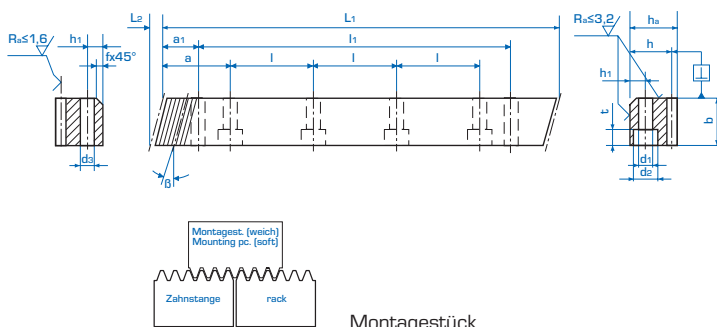
Montagestücke siehe Seite B 15/16 / Mounting pieces page B 15/16

Zahnstangen für fortl. Montage mit geschl. Zahnflanken, schrägverzahnt

Racks for continuous mounting with ground teeth, helical

Steel: 1.7131
[16MnCr5]
 helix angle
 19° 31' 42" right hand
 toothing quality 6h25
 case hardened
 60 HRC

Stahl: 1.7131
[16MnCr5]
 Schrägungswinkel
 19° 31' 42" rechts
 Verz. Qual. 6h25
 einsatzgehärtet
 60 HRC



Montagestück

mit Bohrungen

with bores

| Modul | | | | | | | | | | | | | | | | Bestell Nr. | | |
|--------|----------------|----------------|-----|----|----------------|------|------|-----|----------------|----------------|----------------|-------------------|---|----------------|----------------|----------------|-------|-------------|
| Module | L ₁ | L ₂ | z* | b | h _a | h | a | l | h ₁ | d ₁ | d ₂ | f ^{+0,5} | t | a ₁ | l ₁ | d ₃ | [kg] | Part No. |
| 2,0 | 500,0 | 8,5 | 75 | 24 | 24 | 22,0 | 62,5 | 125 | 8 | 7 | 11 | 2 | 7 | 31,7 | 436,6 | 5,7 | 2,10 | 143-020-205 |
| 2,0 | 1 000,0 | 8,5 | 150 | 24 | 24 | 22,0 | 62,5 | 125 | 8 | 7 | 11 | 2 | 7 | 31,7 | 936,6 | 5,7 | 4,20 | 143-020-210 |
| 3,0 | 500,0 | 10,3 | 50 | 29 | 29 | 26,0 | 62,5 | 125 | 9 | 10 | 15 | 2 | 9 | 35,0 | 430,0 | 7,7 | 3,00 | 143-030-205 |
| 3,0 | 1 000,0 | 10,3 | 100 | 29 | 29 | 26,0 | 62,5 | 125 | 9 | 10 | 15 | 2 | 9 | 35,0 | 930,6 | 7,7 | 6,00 | 143-030-210 |
| 4,0 | 506,7 | 13,8 | 38 | 39 | 39 | 35,0 | 62,5 | 125 | 12 | 10 | 15 | 3 | 9 | 33,3 | 433,0 | 7,7 | 5,30 | 143-040-205 |
| 4,0 | 1 000,0 | 13,8 | 75 | 39 | 39 | 35,0 | 62,5 | 125 | 12 | 10 | 15 | 3 | 9 | 33,3 | 933,4 | 7,7 | 10,50 | 143-040-210 |

ohne Bohrungen

without bores

| Modul | | | | | | | | | | | | | | | | Bestell Nr. | | |
|--------|----------------|----------------|-----|----|----------------|------|---|---|----------------|----------------|----------------|-------------------|---|----------------|----------------|----------------|-------|-------------|
| Module | L ₁ | L ₂ | z* | b | h _a | h | a | l | h ₁ | d ₁ | d ₂ | f ^{+0,5} | t | a ₁ | l ₁ | d ₃ | [kg] | Part No. |
| 2,0 | 500,0 | 8,5 | 75 | 24 | 24 | 22,0 | - | - | - | - | - | 2 | - | - | - | - | 2,10 | 143-020-105 |
| 2,0 | 1 000,0 | 8,5 | 150 | 24 | 24 | 22,0 | - | - | - | - | - | 2 | - | - | - | - | 4,20 | 143-020-110 |
| 3,0 | 500,0 | 10,3 | 50 | 29 | 29 | 26,0 | - | - | - | - | - | 2 | - | - | - | - | 3,00 | 143-030-105 |
| 3,0 | 1 000,0 | 10,3 | 100 | 29 | 29 | 26,0 | - | - | - | - | - | 2 | - | - | - | - | 6,00 | 143-030-110 |
| 4,0 | 506,7 | 13,8 | 38 | 39 | 39 | 35,0 | - | - | - | - | - | 3 | - | - | - | - | 5,30 | 143-040-105 |
| 4,0 | 1 000,0 | 13,8 | 75 | 39 | 39 | 35,0 | - | - | - | - | - | 3 | - | - | - | - | 10,50 | 143-040-110 |

z*... Zähnezahl / *number of teeth*

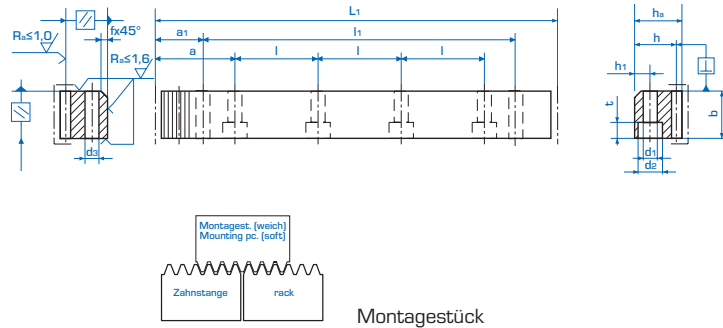
Montagestücke siehe Seite B 15/16 / *Mounting pieces page B 15/16*

Zahnstangen für fortl. Montage mit geschl. Zahnflanken, geradverzahnt

Racks for continuous mounting with ground teeth, straight teeth

Steel: 1.0503
[C 45K]
 straight teeth,
 pressure angle 20°
 tooth quality 6h25
 induction hardened
 50-55 HRC

Stahl: 1.0503
 [C 45K]
 geradverzahnt,
 Eingriffswinkel 20°
 Verz. Qual. 6h25
 induktiv gehärtet
 50-55 HRC



Stahl: 1.0503 [C 45K], induktiv geh. 50 - 55 HRC

Steel: 1.0503 [C 45K], induction hardened 50 - 55 HRC

| Modul | | | | | | | | | | | | Bestell Nr. | |
|--------|-------|-------|-----|-------|-----|-------|-----|-------|-------|-------|-----|-------------|-------------|
| Module | L_1 | z^* | b | h_a | h | a | l | h_1 | d_1 | d_2 | t | [kg] | Part No. |
| 2,0 | 999 | 159 | 24 | 24 | 22 | 99,5 | 200 | 8 | 6,6 | 11 | 7 | 4,2 | 144-020-410 |
| 3,0 | 999 | 106 | 29 | 29 | 26 | 99,5 | 200 | 9 | 9 | 15 | 9 | 6,0 | 144-030-410 |
| 4,0 | 1 005 | 80 | 39 | 39 | 35 | 102,6 | 200 | 12 | 9 | 15 | 9 | 10,5 | 144-040-410 |

mit Bohrungen

with bores

| Modul | | | | | | | | | | | | | | | | Bestell Nr. | |
|--------|--------|-------|-----|-------|-----|------|--------|-------|-------|-------|------------|-----|-------|-------|-------|-------------|-------------|
| Module | L_1 | z^* | b | h_a | h | a | l | h_1 | d_1 | d_2 | $f^{+0,5}$ | t | a_1 | l_1 | d_3 | [kg] | Part No. |
| 5,0 | 502,6 | 32 | 49 | 39 | 34 | 62,8 | 125,66 | 12 | 14 | 20 | 3 | 13 | 30,1 | 442,4 | 11,7 | 6,7 | 144-050-405 |
| 5,0 | 1005,3 | 64 | 49 | 39 | 34 | 62,8 | 125,66 | 12 | 14 | 20 | 3 | 13 | 30,1 | 945,0 | 11,7 | 13,4 | 144-050-410 |
| 6,0 | 508,9 | 27 | 59 | 49 | 43 | 63,6 | 127,23 | 16 | 18 | 26 | 3 | 17 | 31,4 | 446,1 | 15,7 | 10,4 | 144-060-405 |
| 6,0 | 1017,8 | 54 | 59 | 49 | 43 | 63,6 | 127,23 | 16 | 18 | 26 | 3 | 17 | 31,4 | 955,0 | 15,7 | 20,2 | 144-060-410 |

ohne Bohrungen

without bores

| Modul | | | | | | | | | | | | | | | | Bestell Nr. | |
|--------|--------|-------|-----|-------|-----|-----|-----|-------|-------|-------|------------|-----|-------|-------|-------|-------------|-------------|
| Module | L_1 | z^* | b | h_a | h | a | l | h_1 | d_1 | d_2 | $f^{+0,5}$ | t | a_1 | l_1 | d_3 | [kg] | Part No. |
| 5,0 | 502,6 | 32 | 49 | 39 | 34 | | | | | | 3 | | | | | 6,7 | 144-050-305 |
| 5,0 | 1005,3 | 64 | 49 | 39 | 34 | | | | | | 3 | | | | | 13,4 | 144-050-310 |
| 6,0 | 508,9 | 27 | 59 | 49 | 43 | | | | | | 3 | | | | | 10,4 | 144-060-305 |
| 6,0 | 1017,8 | 54 | 59 | 49 | 43 | | | | | | 3 | | | | | 20,2 | 144-060-315 |

Montagestück, geradverzahnt, Stahl: 1.0503 [C 45K]

Mounting piece, straight teeth, Steel: 1.0503 [C 45K]

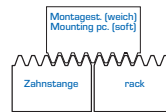
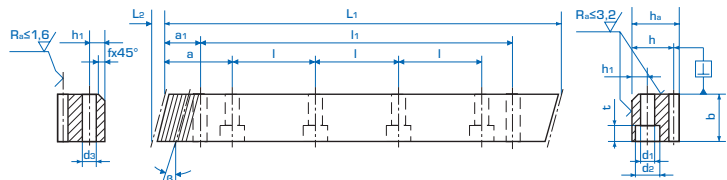
| Modul | | | | | | | | | | | | Bestell Nr. | |
|--------|-------|-------|-----|--|--|--|--|--|--|--|--|-------------|-------------|
| Module | L_1 | z^* | b | | | | | | | | | [kg] | Part No. |
| 2,0 | 200 | 32 | 25 | | | | | | | | | 0,85 | 144-020-001 |
| 3,0 | 200 | 21 | 30 | | | | | | | | | 1,20 | 144-030-001 |
| 4,0 | 253 | 20 | 40 | | | | | | | | | 2,70 | 144-040-001 |
| 5,0 | 250 | 16 | 50 | | | | | | | | | 3,30 | 144-050-001 |
| 6,0 | 264 | 14 | 60 | | | | | | | | | 5,0 | 144-060-001 |

Zahnstangen für fortl. Montage mit geschl. Zahnflanken, schrägverzahnt

Racks for continuous mounting with ground teeth, helical

Steel: 1.0503
[C 45K]
 helix angle
 19° 31' 42" right hand
 tooth quality 6h25
 induction hardened
 50-55 HRC

Stahl: 1.0503
 [C 45K]
 Schrägungswinkel
 19° 31' 42" rechts
 Verz. Qual. 6h25
 induktivgehärtet
 50-55 HRC



Montagestück

Stahl: 1.0503 [C 45K], induktivgehärtet, 50-55 HRC

Steel: 1.0503 [C 45K], induction hardened, 50-55 HRC

| Modul | | | | | | | | | | | | | | | | Bestell Nr. | | |
|--------|----------------|----------------|-----|----|----------------|----|------|-----|----------------|----------------|----------------|-------------------|---|----------------|----------------|----------------|-------|-------------|
| Module | L ₁ | L ₂ | z* | b | h _a | h | a | l | h ₁ | d ₁ | d ₂ | f ^{+0.5} | t | a ₁ | l ₁ | d ₃ | [kg] | Part No. |
| 2,0 | 1 000,0 | 8,5 | 150 | 24 | 24 | 22 | 91,5 | 200 | 8 | 6,6 | 11 | - | 7 | - | - | - | 4,20 | 143-020-410 |
| 3,0 | 1 000,0 | 10,3 | 100 | 29 | 29 | 26 | 89,7 | 200 | 9 | 9 | 15 | - | 9 | - | - | - | 6,00 | 143-030-410 |
| 4,0 | 1 000,0 | 13,8 | 75 | 39 | 39 | 35 | 86,2 | 200 | 12 | 9 | 15 | - | 9 | - | - | - | 10,50 | 143-040-410 |

mit Bohrungen

with bores

| Modul | | | | | | | | | | | | | | | | Bestell Nr. | | |
|--------|----------------|----------------|----|----|----------------|----|------|-----|----------------|----------------|----------------|-------------------|----|----------------|----------------|----------------|------|-------------|
| Module | L ₁ | L ₂ | z* | b | h _a | h | a | l | h ₁ | d ₁ | d ₂ | f ^{+0.5} | t | a ₁ | l ₁ | d ₃ | [kg] | Part No. |
| 5,0 | 499,1 | 17,4 | 30 | 49 | 39 | 34 | 62,5 | 125 | 12 | 14 | 20 | 3 | 13 | 37,5 | 425 | 11,7 | 6,5 | 143-050-405 |
| 5,0 | 999,1 | 17,4 | 60 | 49 | 39 | 34 | 62,5 | 125 | 12 | 14 | 20 | 3 | 13 | 37,5 | 925 | 11,7 | 13 | 143-050-410 |
| 6,0 | 499,1 | 20,9 | 25 | 59 | 49 | 43 | 62,5 | 125 | 16 | 18 | 26 | 3 | 17 | 37,5 | 425 | 15,7 | 9,9 | 143-060-405 |
| 6,0 | 999,1 | 20,9 | 50 | 59 | 49 | 43 | 62,5 | 125 | 16 | 18 | 26 | 3 | 17 | 37,5 | 925 | 15,7 | 19,8 | 143-060-410 |

ohne Bohrungen

without bores

| Modul | | | | | | | | | | | | | | | | Bestell Nr. | | |
|--------|----------------|----------------|----|----|----------------|----|---|---|----------------|----------------|----------------|-------------------|---|----------------|----------------|----------------|------|-------------|
| Module | L ₁ | L ₂ | z* | b | h _a | h | a | l | h ₁ | d ₁ | d ₂ | f ^{+0.5} | t | a ₁ | l ₁ | d ₃ | [kg] | Part No. |
| 5,0 | 499,1 | 17,4 | 30 | 49 | 39 | 34 | | | | | | 3 | | | | | 6,5 | 143-050-305 |
| 5,0 | 999,1 | 17,4 | 60 | 49 | 39 | 34 | | | | | | 3 | | | | | 13 | 143-050-310 |
| 6,0 | 499,1 | 20,9 | 25 | 59 | 49 | 43 | | | | | | 3 | | | | | 9,9 | 143-060-305 |
| 6,0 | 999,1 | 20,9 | 50 | 59 | 49 | 43 | | | | | | 3 | | | | | 19,8 | 143-060-310 |

Montagestück, schrägverzahnt, Stahl: 1.0503 [C 45K]

Mounting piece, helix angle, Steel: 1.0503 [C 45K]

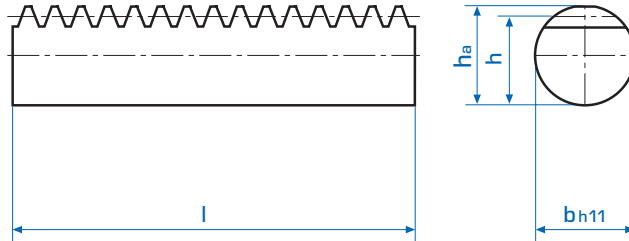
| Modul | | | | | | | Bestell Nr. | |
|--------|----------------|----------------|----|----|----------------|------|-------------|-------------|
| Module | L ₁ | L ₂ | z* | b | h _a | h | [kg] | Part No. |
| 2,0 | 200,0 | 8,5 | 30 | 24 | 24 | 22,0 | 0,85 | 143-020-001 |
| 3,0 | 200,0 | 10,3 | 20 | 29 | 29 | 26,0 | 1,20 | 143-030-001 |
| 4,0 | 200,0 | 13,8 | 15 | 39 | 39 | 35,0 | 2,70 | 143-040-001 |
| 5,0 | 250,0 | 17,7 | 15 | 50 | 39 | 34,0 | 3,30 | 143-050-001 |
| 6,0 | 250,0 | 21,3 | 12 | 60 | 59 | 43,0 | 5,0 | 143-060-001 |

Rundzahnstangen

Round racks

Steel: 1.0503 [C 45]
 straight teeth,
 pressure angle 20°

Stahl: 1.0503 [C 45]
 geradverzahnt,
 Eingriffswinkel 20°



| Modul Module | h_a | h | b_{h11} | l | [kg] | Bestell Nr. Part No. |
|-----------------|------------------|--------------|-----------|-------|-------|-------------------------|
| 1,0 | $9,80 \pm 0,10$ | 8,8 - 0,10 | 10 | 250 | 0,14 | 141-010-025 |
| 1,0 | $9,80 \pm 0,10$ | 8,8 - 0,10 | 10 | 500 | 0,27 | 141-010-050 |
| 1,5 | $14,80 \pm 0,10$ | 13,3 - 0,10 | 15 | 250 | 0,31 | 141-015-025 |
| 1,5 | $14,80 \pm 0,10$ | 13,3 - 0,10 | 15 | 500 | 0,61 | 141-015-050 |
| 1,5 | $14,80 \pm 0,15$ | 13,3 - 0,15 | 15 | 1 000 | 1,22 | 141-015-100 |
| 2,0 | $19,75 \pm 0,10$ | 17,75 - 0,10 | 20 | 250 | 0,55 | 141-020-025 |
| 2,0 | $19,75 \pm 0,10$ | 17,75 - 0,10 | 20 | 500 | 1,10 | 141-020-050 |
| 2,0 | $19,75 \pm 0,15$ | 17,75 - 0,15 | 20 | 1 000 | 2,20 | 141-020-100 |
| 2,5 | $24,75 \pm 0,10$ | 22,25 - 0,10 | 25 | 250 | 0,83 | 141-025-025 |
| 2,5 | $24,75 \pm 0,10$ | 22,25 - 0,10 | 25 | 500 | 1,65 | 141-025-050 |
| 2,5 | $24,75 \pm 0,15$ | 22,25 - 0,15 | 25 | 1 000 | 3,30 | 141-025-100 |
| 3,0 | $29,75 \pm 0,10$ | 26,75 - 0,10 | 30 | 250 | 1,22 | 141-030-025 |
| 3,0 | $29,75 \pm 0,10$ | 26,75 - 0,10 | 30 | 500 | 2,44 | 141-030-050 |
| 3,0 | $29,75 \pm 0,20$ | 26,75 - 0,20 | 30 | 1 000 | 4,80 | 141-030-100 |
| 4,0 | $39,70 \pm 0,10$ | 35,70 - 0,10 | 40 | 250 | 2,16 | 141-040-025 |
| 4,0 | $39,70 \pm 0,10$ | 35,70 - 0,10 | 40 | 500 | 4,32 | 141-040-050 |
| 4,0 | $39,70 \pm 0,20$ | 35,70 - 0,20 | 40 | 1 000 | 8,64 | 141-040-100 |
| 5,0 | $49,70 \pm 0,10$ | 44,70 - 0,10 | 50 | 250 | 3,38 | 141-050-025 |
| 5,0 | $49,70 \pm 0,10$ | 44,70 - 0,10 | 50 | 500 | 6,75 | 141-050-050 |
| 5,0 | $49,70 \pm 0,20$ | 44,70 - 0,20 | 50 | 1 000 | 13,50 | 141-050-100 |

| Modul Module | h_a | h | b_{h11} | l | [kg] | Bestell Nr. Part No. |
|-----------------|------------------|--------------|-----------|-------|------|-------------------------|
| 1,591 p = 5 mm | $14,80 \pm 0,10$ | 13,21 - 0,10 | 15 | 500 | 0,65 | 141-016-050 |
| 1,591 p = 5 mm | $14,80 \pm 0,15$ | 13,21 - 0,15 | 15 | 1 000 | 1,25 | 141-016-100 |
| 3,183 p = 10 mm | $29,70 \pm 0,15$ | 26,52 - 0,15 | 30 | 500 | 2,35 | 141-031-050 |
| 3,183 p = 10 mm | $29,70 \pm 0,20$ | 26,52 - 0,20 | 30 | 1 000 | 4,80 | 141-031-100 |

Sollten Sie andere Abmessungen benötigen, helfen Ihnen unsere Konstrukteure gerne weiter.

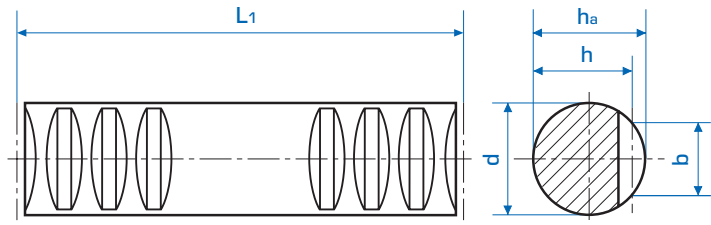
If you need other dimensions - please contact our engineering department.

Rundzahnstangen für fortl. Montage

Round racks for continuous mounting

**Steel: coated
straight teeth,
pressure angle 20°
toothing quality 8e27**

**Stahl: vergütet
geradverzahnt,
Eingriffswinkel 20°
Verz. Qual. 8e27**



Zahnflanken und Außendurchmesser geschliffen

teeth and diameter ground

| Modul Module | L_1 | z^* | d_{h6} | b | h_a | h | [kg] | Bestell Nr. Part No. |
|-----------------|---------|-------|----------|------|-------|------|------|-------------------------|
| 1,0 | 499,5 | 159 | 10 | 6,0 | 10 | 9,0 | 0,66 | 141-410-050 |
| 1,0 | 999,0 | 318 | 10 | 6,0 | 10 | 9,0 | 1,35 | 141-410-100 |
| 1,5 | 499,5 | 106 | 15 | 10,0 | 15 | 13,5 | 0,84 | 141-415-050 |
| 1,5 | 999,0 | 212 | 15 | 10,0 | 15 | 13,5 | 1,70 | 141-415-100 |
| 2,0 | 502,7 | 80 | 20 | 12,0 | 20 | 18,0 | 1,10 | 141-420-050 |
| 2,0 | 999,0 | 159 | 20 | 12,0 | 20 | 18,0 | 2,20 | 141-420-100 |
| 3,0 | 499,5 | 53 | 30 | 18,0 | 30 | 27,0 | 2,50 | 141-430-050 |
| 3,0 | 999,0 | 106 | 30 | 18,0 | 30 | 27,0 | 5,10 | 141-430-100 |
| 4,0 | 502,6 | 40 | 40 | 24,0 | 40 | 36,0 | 4,50 | 141-440-050 |
| 4,0 | 1 005,3 | 80 | 40 | 24,0 | 40 | 36,0 | 9,10 | 141-440-100 |

**Steel: 1.4305
[x 10 CrNiS 189]
sainless steel
straight teeth,
pressure angle 20°
toothing quality 8e27**

**Stahl: 1.4305
[x 10 CrNiS 189]
rostfrei
geradverzahnt,
Eingriffswinkel 20°
Verz. Qual. 8e27**

| Modul Module | L_1 | z^* | d_{h9} | b | h_a | h | [kg] | Bestell Nr. Part No. |
|-----------------|-------|-------|----------|------|-------|------|------|-------------------------|
| 1,0 | 499,5 | 159 | 10 | 6,0 | 9,9 | 8,9 | 0,66 | 141-510-050 |
| 1,0 | 999,0 | 318 | 10 | 6,0 | 9,9 | 8,9 | 1,35 | 141-510-100 |
| 1,5 | 499,5 | 106 | 15 | 9,0 | 14,9 | 13,4 | 0,84 | 141-515-050 |
| 1,5 | 999,0 | 212 | 15 | 9,0 | 14,9 | 13,4 | 1,70 | 141-515-100 |
| 2,0 | 502,6 | 80 | 20 | 12,0 | 19,8 | 17,8 | 1,10 | 141-520-050 |
| 2,0 | 999,0 | 159 | 20 | 12,0 | 19,8 | 17,8 | 2,20 | 141-520-100 |
| 3,0 | 499,5 | 53 | 30 | 18,0 | 29,8 | 26,8 | 2,50 | 141-530-050 |
| 3,0 | 999,0 | 106 | 30 | 18,0 | 29,8 | 26,8 | 5,10 | 141-530-100 |

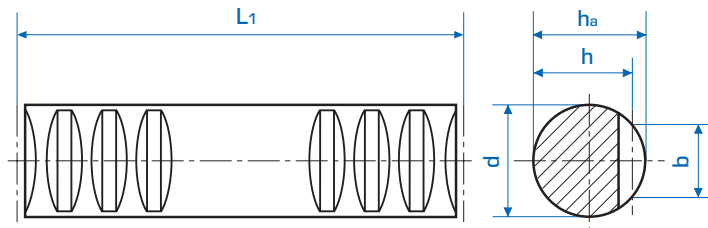
z^* ... Zähnezahl / *number of teeth*

Rundzahnstangen für fortl. Montage

Round racks for continuous mounting

Steel: 1.0503
[C 45 K]
 straight teeth,
 pressure angle 20°
 toothing quality 9e27

Stahl: 1.0503
 [C 45 K]
 geradverzahnt,
 Eingriffswinkel 20°
 Verz. Qual. 9e27



| Modul Module | L_1 | z^* | d_{h11} | b | h_a | h | [kg] | Bestell Nr. Part No. |
|-----------------|---------|-------|-----------|------|-------|------|-------|-------------------------|
| 1,0 | 251,3 | 80 | 15 | 7,5 | 15 | 14,0 | 0,34 | 141-610-025 |
| 1,0 | 499,5 | 159 | 15 | 7,5 | 15 | 14,0 | 0,66 | 141-610-050 |
| 1,0 | 999,0 | 318 | 15 | 7,5 | 15 | 14,0 | 1,35 | 141-610-100 |
| 1,5 | 249,8 | 53 | 17 | 9,6 | 17 | 15,5 | 0,42 | 141-615-025 |
| 1,5 | 499,5 | 106 | 17 | 9,6 | 17 | 15,5 | 0,84 | 141-615-050 |
| 1,5 | 999,0 | 212 | 17 | 9,6 | 17 | 15,5 | 1,70 | 141-615-100 |
| 2,0 | 251,3 | 40 | 20 | 12,0 | 20 | 18,0 | 0,55 | 141-620-025 |
| 2,0 | 502,7 | 80 | 20 | 12,0 | 20 | 18,0 | 1,10 | 141-620-050 |
| 2,0 | 999,0 | 159 | 20 | 12,0 | 20 | 18,0 | 2,20 | 141-620-100 |
| 2,5 | 251,3 | 32 | 25 | 15,0 | 25 | 22,5 | 0,90 | 141-625-025 |
| 2,5 | 502,7 | 64 | 25 | 15,0 | 25 | 22,5 | 1,80 | 141-625-050 |
| 2,5 | 997,5 | 127 | 25 | 15,0 | 25 | 22,5 | 3,60 | 141-625-100 |
| 3,0 | 254,5 | 27 | 30 | 18,0 | 30 | 27,0 | 1,30 | 141-630-025 |
| 3,0 | 499,5 | 53 | 30 | 18,0 | 30 | 27,0 | 2,50 | 141-630-050 |
| 3,0 | 999,0 | 106 | 30 | 18,0 | 30 | 27,0 | 5,10 | 141-630-100 |
| 4,0 | 251,3 | 20 | 40 | 24,0 | 40 | 36,0 | 2,30 | 141-640-025 |
| 4,0 | 502,6 | 40 | 40 | 24,0 | 40 | 36,0 | 4,50 | 141-640-050 |
| 4,0 | 1 005,3 | 80 | 40 | 24,0 | 40 | 36,0 | 9,10 | 141-640-100 |
| 5,0 | 251,3 | 16 | 50 | 30,0 | 50 | 45,0 | 3,80 | 141-650-025 |
| 5,0 | 502,6 | 32 | 50 | 30,0 | 50 | 45,0 | 7,10 | 141-650-050 |
| 5,0 | 1 005,3 | 64 | 50 | 30,0 | 50 | 45,0 | 14,30 | 141-650-100 |

Verz. Qualität 8e27

toothing quality 8e27

| Teilung pitch | Modul Module | L_1 | z | d_{h11} | b | h_a | h | [kg] | Bestell Nr. Part No. |
|------------------|-----------------|-------|-----|-----------|------|-------|------|------|-------------------------|
| 5,0 | 1,591 | 500 | 100 | 15 | 9,6 | 14,8 | 13,2 | 0,85 | 141-616-050 |
| 5,0 | 1,591 | 1 000 | 200 | 15 | 9,6 | 14,8 | 13,2 | 1,70 | 141-616-100 |
| 10,0 | 3,183 | 500 | 50 | 30 | 18,0 | 29,7 | 26,5 | 2,50 | 141-631-050 |
| 10,0 | 3,183 | 1 000 | 100 | 30 | 18,0 | 29,7 | 26,5 | 5,10 | 141-631-100 |

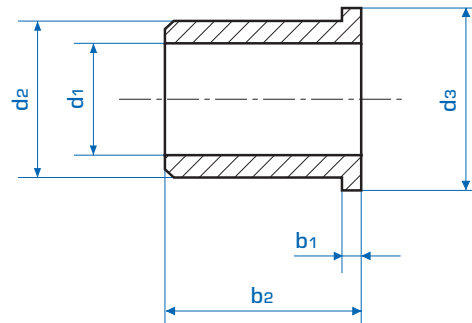
z^* ... Zähnezahl / *number of teeth*

Führungsbuchsen

Bushes

*oil impregnated bronze
bush with MoS₂ added*

einbaufertig, aus Sinterbronze
mit eingelagertem
Festschmierstoff MoS₂



| d_{1G7} | d_{2R6} | d_3 | b_1 | b_2 | [kg] | Bestell Nr. Part No. |
|-----------|-----------|-------|-------|-------|-------|-------------------------|
| 10 | 16 | 22 | 3 | 16 | 0,017 | 141-010-000 |
| 15 | 21 | 26 | 3 | 16 | 0,025 | 141-015-000 |
| 20 | 26 | 32 | 3 | 25 | 0,042 | 141-020-000 |
| 30 | 38 | 46 | 4 | 30 | 0,115 | 141-030-000 |
| 40 | 50 | 60 | 5 | 50 | 0,270 | 141-040-000 |

Sollten Sie andere Abmessungen benötigen, helfen Ihnen unsere Konstrukteure gerne weiter.

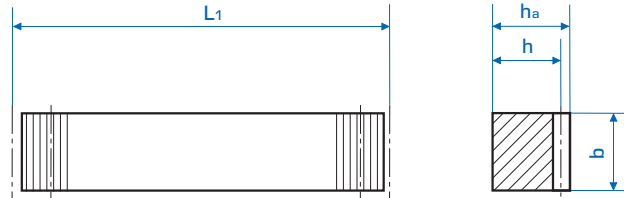
If you need other dimensions - please contact our engineering department.

Kunststoff Zahnstangen

Synthetic Racks

Nylon P 6
 mat. machined
 straight teeth,
 pressure angle 20°

Polyamid PA 6
 spanabhebend bearbeitet
 geradverzahnt,
 Eingriffswinkel 20°



| Modul Module | L ₁ | z* | b | h _a | h | [kg] | Bestell Nr. Part No. |
|-----------------|----------------|-----|----|----------------|------|------|-------------------------|
| 1,0 | 250,0 | 80 | 10 | 10 | 9,0 | 0,03 | 148-010-602 |
| 1,0 | 500,0 | 159 | 10 | 10 | 9,0 | 0,05 | 148-010-605 |
| 1,0 | 999,0 | 318 | 15 | 15 | 14,0 | 0,30 | 148-010-610 |
| 1,5 | 250,0 | 53 | 15 | 15 | 13,5 | 0,06 | 148-015-602 |
| 1,5 | 500,0 | 106 | 15 | 15 | 13,5 | 0,11 | 148-015-605 |
| 1,5 | 999,0 | 212 | 17 | 17 | 15,5 | 0,36 | 148-015-610 |
| 2,0 | 251,3 | 40 | 20 | 20 | 18,0 | 0,13 | 148-020-602 |
| 2,0 | 500,0 | 80 | 20 | 20 | 18,0 | 0,20 | 148-020-605 |
| 2,0 | 1 000,0 | 159 | 20 | 20 | 18,0 | 0,40 | 148-020-610 |
| 2,5 | 251,3 | 32 | 25 | 25 | 22,5 | 0,15 | 148-025-602 |
| 2,5 | 500,0 | 64 | 25 | 25 | 22,5 | 0,31 | 148-025-605 |
| 2,5 | 1 000,0 | 127 | 25 | 25 | 22,5 | 0,61 | 148-025-610 |
| 3,0 | 254,5 | 27 | 30 | 30 | 27,0 | 0,20 | 148-030-602 |
| 3,0 | 499,5 | 53 | 30 | 30 | 27,0 | 0,40 | 148-030-605 |
| 3,0 | 999,0 | 106 | 30 | 30 | 27,0 | 0,80 | 148-030-610 |

Acetal Resin
 [Hostaform C]
 injection moulded
 straight teeth,
 pressure angle 20°

Azetalharz
 (Hostaform C)
 gespritzt
 geradverzahnt,
 Eingriffswinkel 20°

| Modul Module | L ₁ | z* | b | h _a | h | [kg] | Bestell Nr. Part No. |
|-----------------|----------------|-----|------|----------------|------|-------|-------------------------|
| 0,5 | 250,0 | 158 | 4 | 4,5 | 4 | 0,005 | 149-005-602 |
| 0,7 | 250,0 | 112 | 6 | 6,7 | 6 | 0,01 | 149-007-602 |
| 1,0 | 250,0 | 79 | 9 | 9 | 8 | 0,03 | 149-010-602 |
| 1,25 | 250,0 | 63 | 10 | 11 | 9,75 | 0,04 | 149-012-602 |
| 1,5 | 250,0 | 53 | 12 | 12 | 10,5 | 0,05 | 149-015-602 |
| 2,0 | 250,0 | 39 | 15,4 | 11 | 9 | 0,05 | 149-020-602 |
| 2,5 | 250,0 | 32 | 17 | 13 | 10,5 | 0,05 | 149-025-602 |
| 3,0 | 250,0 | 26 | 19,4 | 15 | 12 | 0,08 | 149-030-602 |

z*... Zähnezahl / *number of teeth*